

Knowledgebase Article

Using Custom Scan Criteria in NI

© Copyright 2001-2009 EMCO Software

Using Custom Scan Criteria in NI

EMCO Network Inventory 5 allows you to specify the custom scan criteria on the basis of which you can scan the selected machines on your LAN.

EMCO Network Inventory 5 provides the following different types of custom scan:

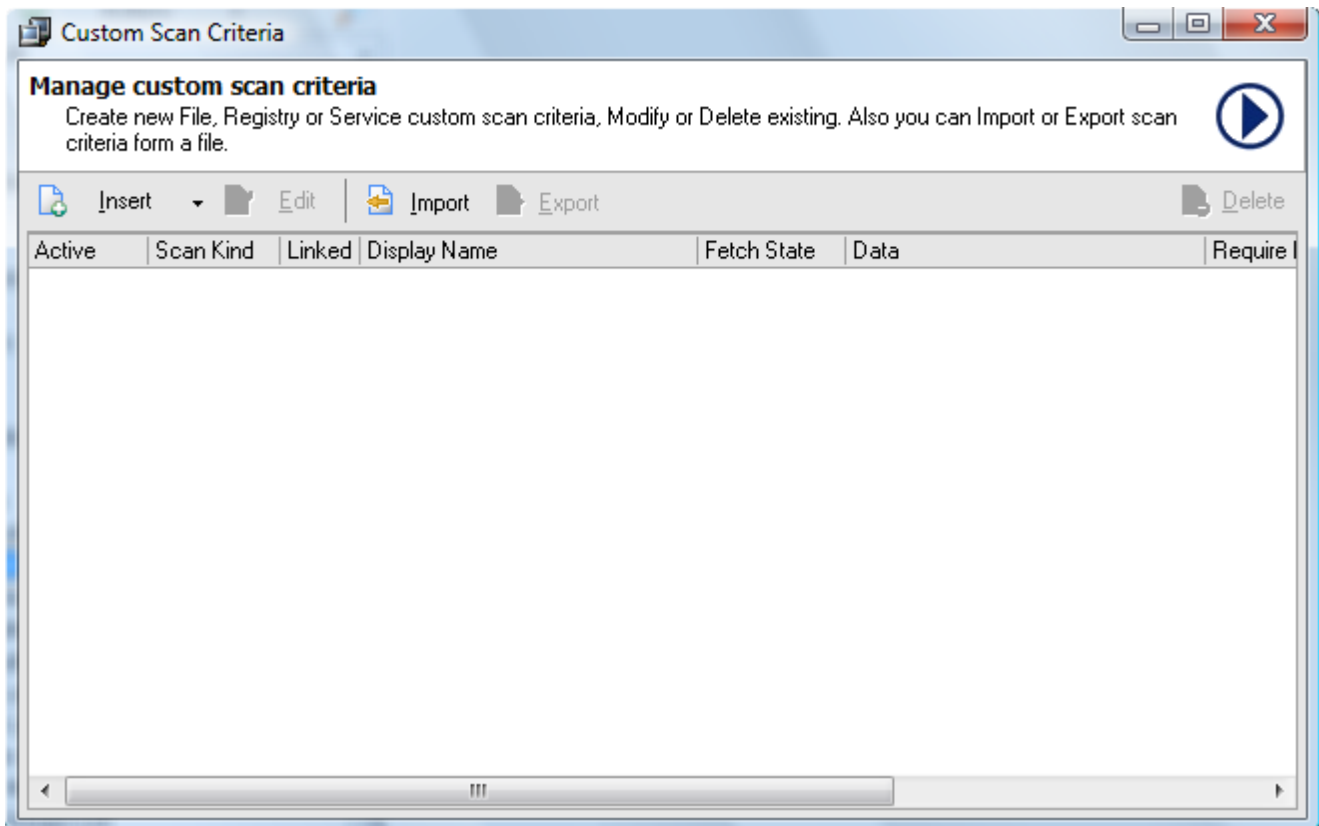
- ▣ [Custom Scan Criteria for Files](#)
- ▣ [Custom Scan Criteria for Registry](#)
- ▣ [Custom Scan Criteria for Services](#)

Custom Scan Criteria for Files

EMCO Network Inventory 5 allows you to create custom scan criteria for files. This helps you to scan selected machines on your network for a specific file. You can specify the file that you want to scan and its version number. Its very useful when you are looking for a specific file on your network or the machines that have a specific program installed on it.

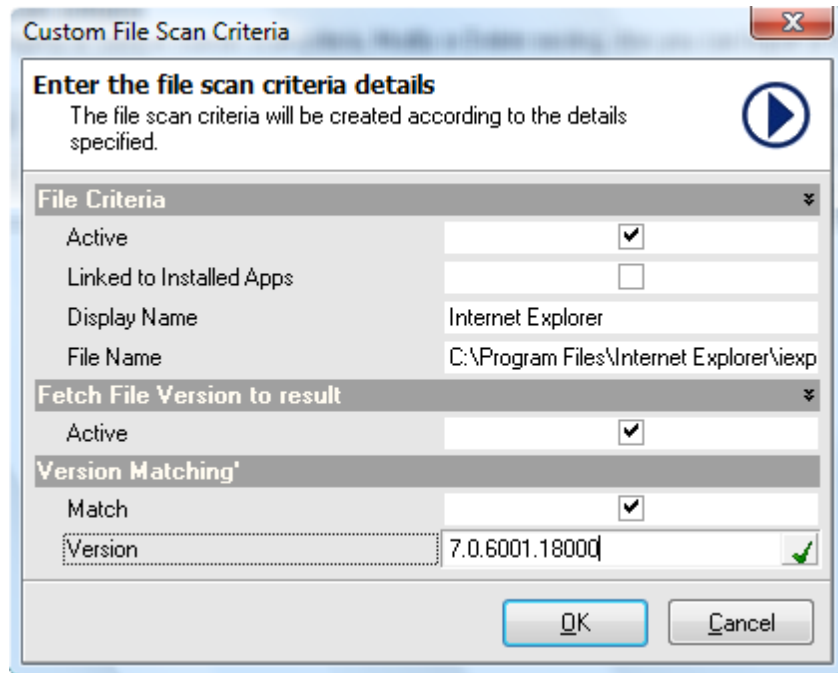
To define custom scan criteria on Files perform the following steps:

1. Expand Management Tools node.
2. Click Custom Scan Criteria item.
3. Custom Scan Criteria dialog appears on the screen.



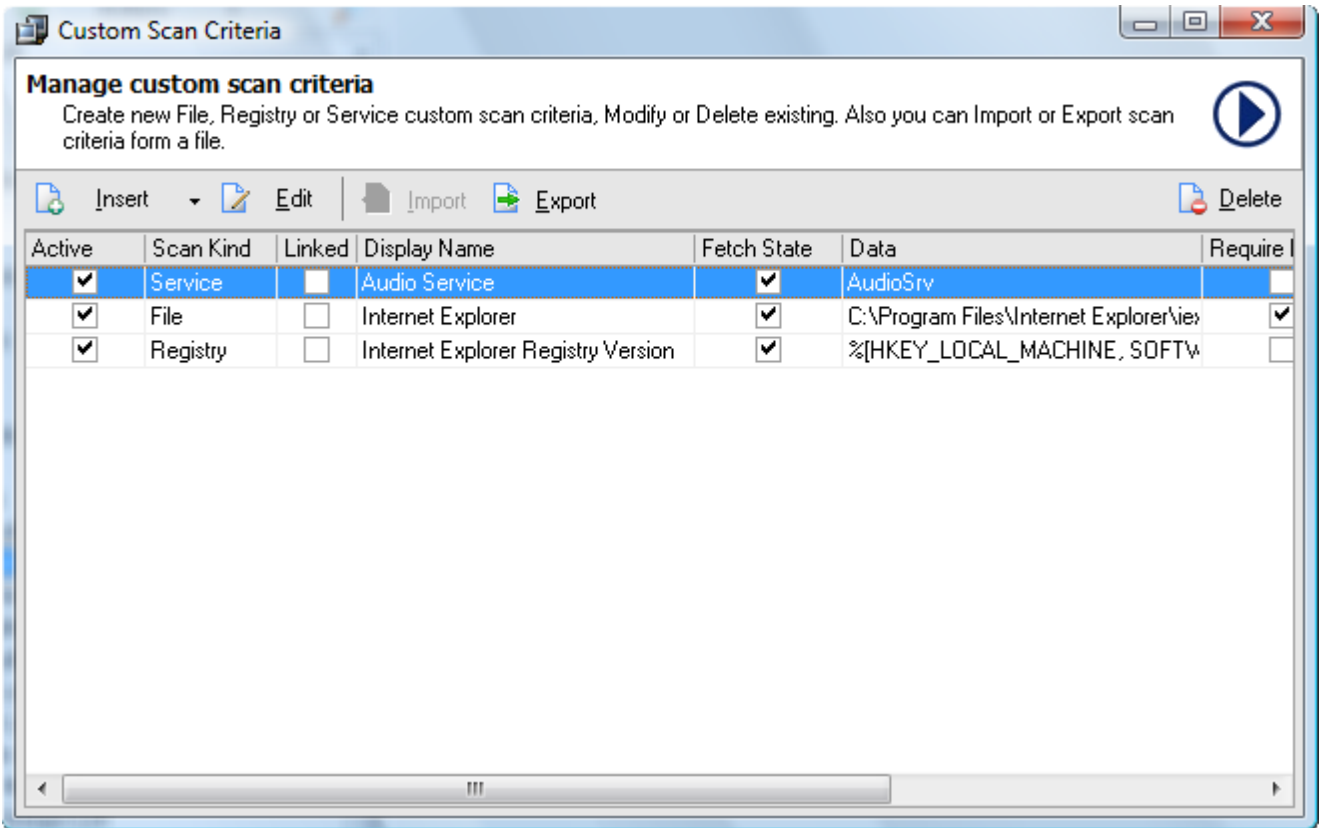
4. Click Insert button.
5. Click File menu item from the pop-up menu.

- Custom File Scan Criteria dialog appears on the screen.



- Check Active check box to activate custom file scan criteria.
- To link it to the installed applications, check Linked to Installed Apps check box.
- Type/select the display name in the Display Name field.
- Select the required file name by clicking the browse button.
- To enable fetch file version to results check the Fetch File Version check box.
- To enable file version matching check the File Version Matching check box.
- Type in the version number in the corresponding field or click fetch button to fetch it automatically form the selected file
- Click OK button.

15. The added custom file scan criteria appears on the screen.

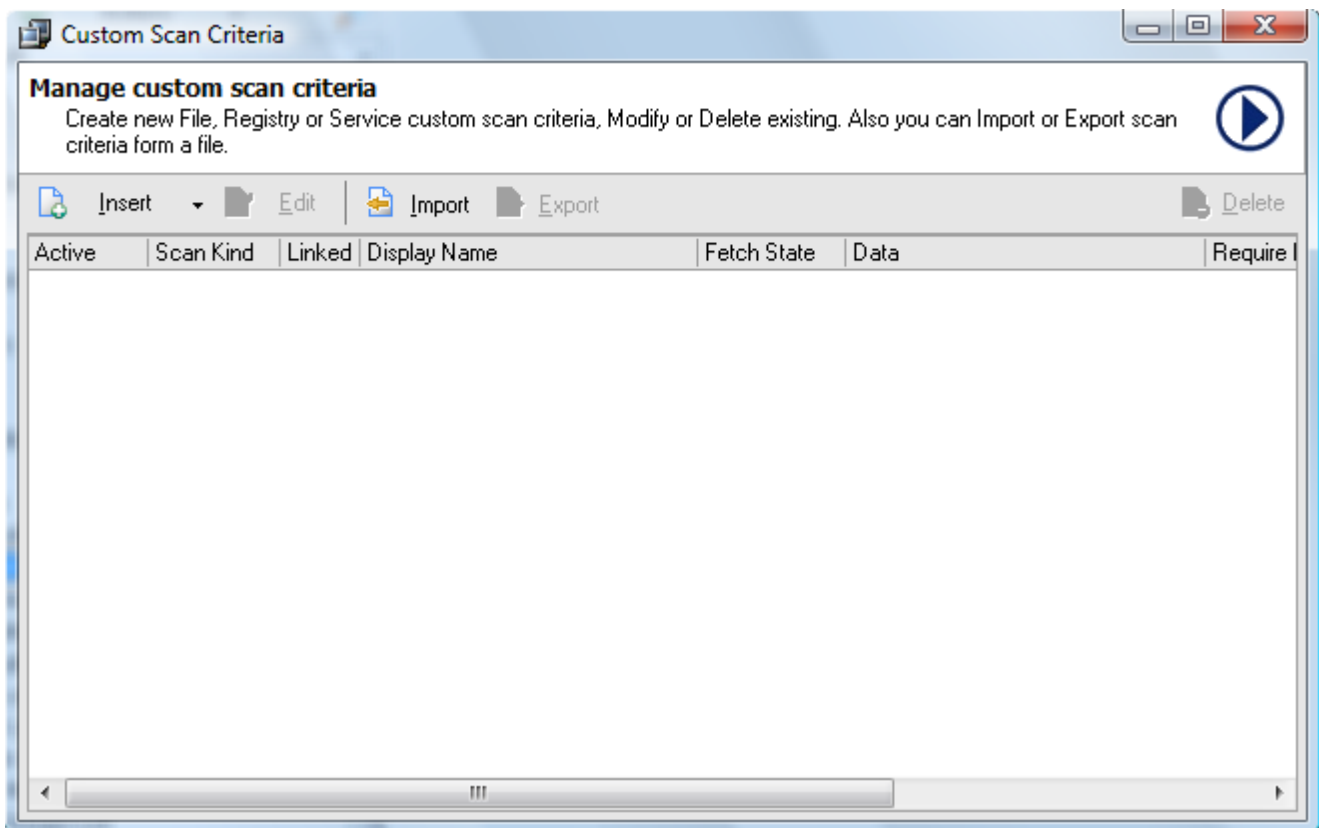


Custom Scan Criteria for Registry

EMCO Network Inventory 5 allows you to specify a custom scan criteria for registry keys from selected machines on your network. You can specify the key, type of the registry key and its value that you want to scan. You can use this feature to scan machines that have the selected registry key with the specified value. This is useful when you want to get the Machines with the selected registry key value is set to the specified.

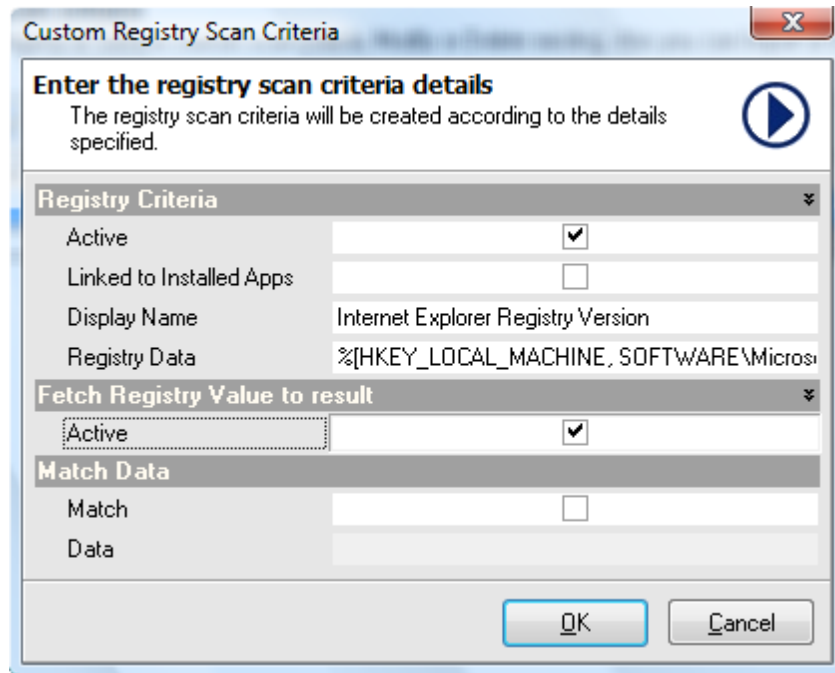
To define custom scan criteria on Registry perform the following steps:

1. Expand Management Tools node.
2. Click Custom Scan Criteria item.
3. Custom Scan Criteria dialog box will appear on the screen.



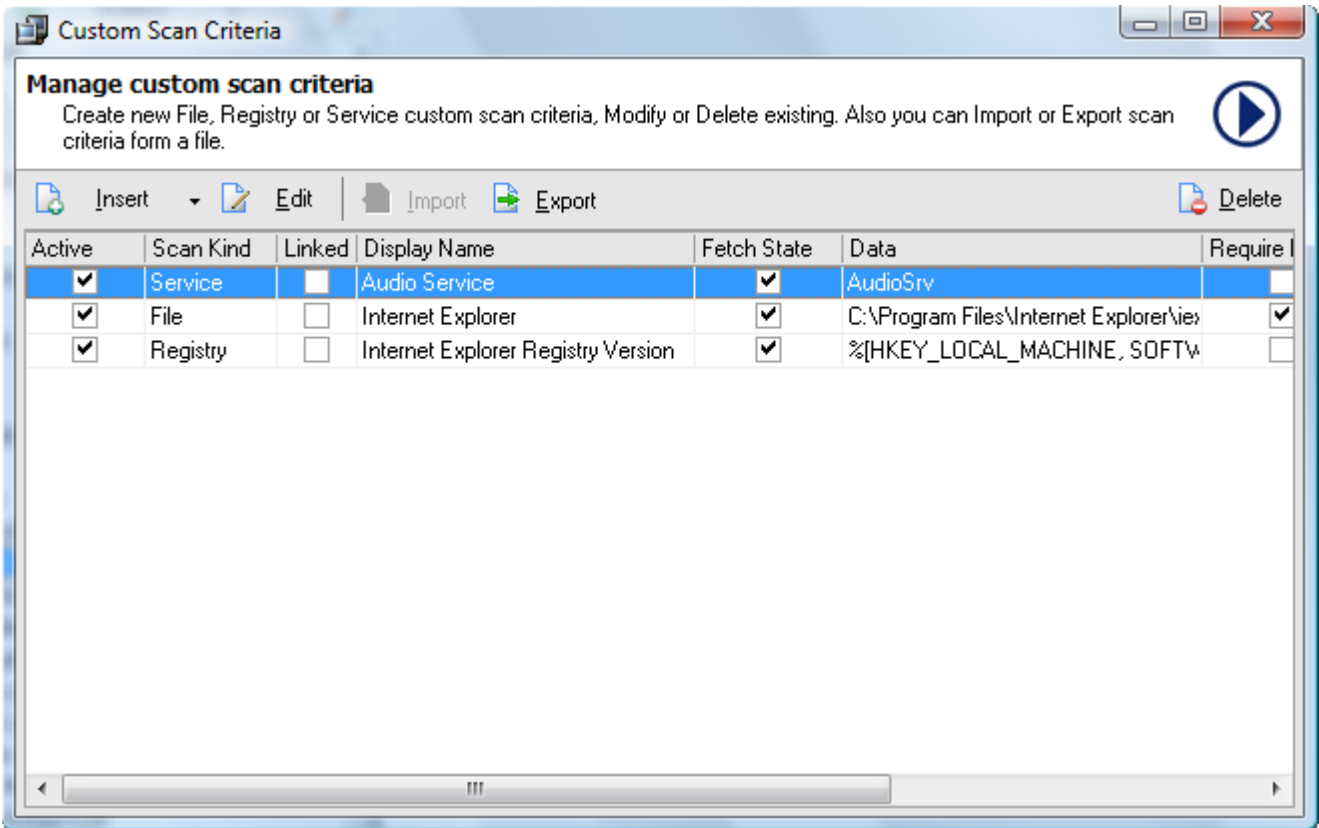
4. Click Insert button.
5. Click Registry menu item from the pop-up menu.

6. Custom Registry Scan Criteria dialog appears on the screen.



7. Check Active check box to activate custom scan criteria on registry.
8. To link it to the installed applications, check Linked to Installed Apps check box.
9. Type in the display name in the Display Name field.
10. Click Registry Data.
11. Registry Data dialog appears on the screen.
12. Select the required Root key.
13. Type its value in the Value field.
14. Type in the key in the Key field.
15. Click OK button.
16. To enable fetching registry values to results check Active check box under Fetch Registry Value to Results.
17. To match data check the Match Data check box.
18. To match data type in the Data field.
19. Click OK button.

20. The added custom registry scan criteria appears on the screen.

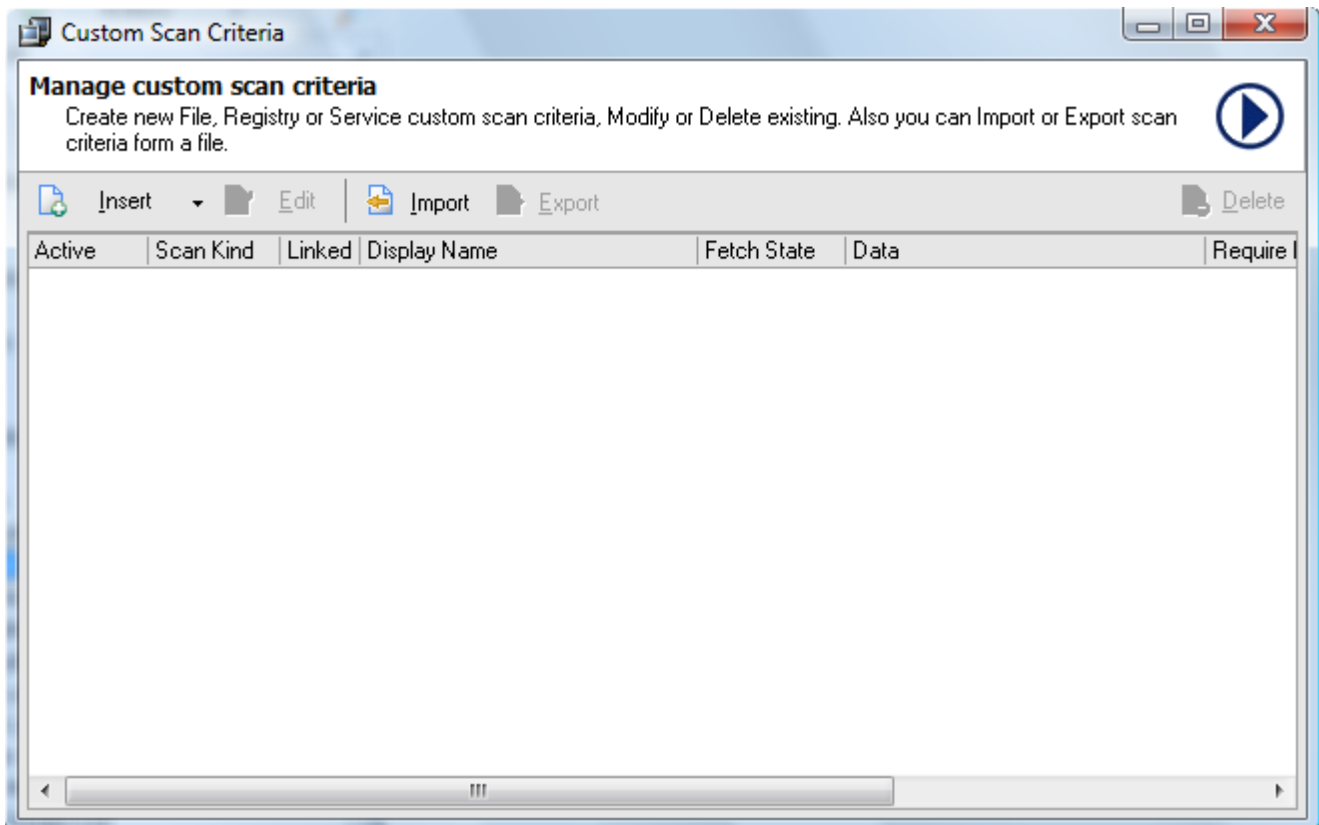


Custom Scan Criteria for Services

EMCO Network Inventory 5 allows you to create custom scan criteria for different services installed on your network. You can specify the name of the service and its required state. This helps you to get the Machines with the specified service installed and its status on them.

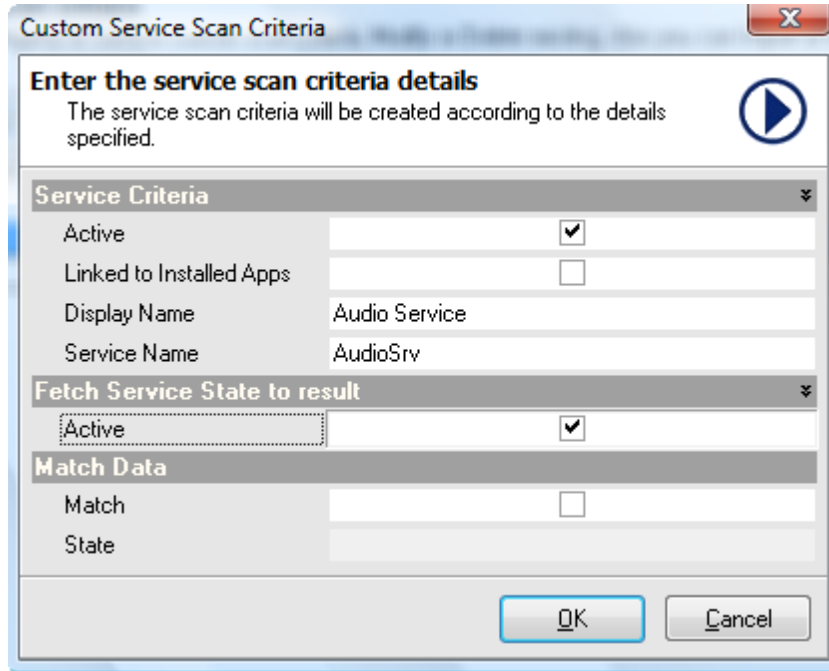
To define custom scan criteria on services perform the following steps:

1. Expand Management Tools node.
2. Click Custom Scan Criteria item.
3. Custom Scan Criteria dialog appears on the screen.



4. Click Insert button.
5. Click Service menu item from the pop-up menu.

6. Custom Service Scan Criteria dialog appears on the screen.



7. Check Active check box to activate custom service scan criteria.
8. If you want to link it to an installed application, check Linked to Installed Application check box.
9. Type in the display name in the Display Name field.
10. Select the required service name from the drop-down list.
11. To enable fetch service state to results checks the Fetch Service State to Results check box.
12. To enable match data check the Match Data check box.
13. Select the required state from the State drop down list.
14. Click OK button.

15. The added custom service scan criteria appears on the screen.

