

# Knowledgebase Article

---

## Using Auto-Update in Network Inventory

© Copyright 2001-2009 EMCO Software

## Using Auto-Update in Network Inventory

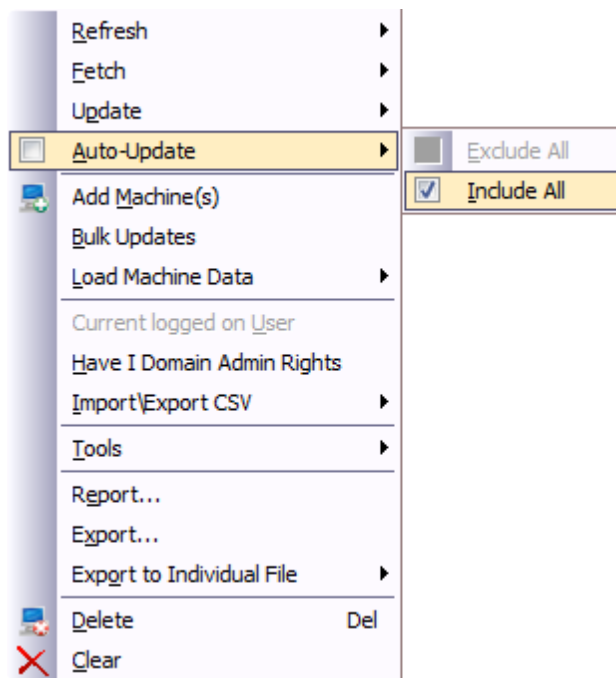
EMCO Network Inventory 5 comes up with an exciting feature of auto update which allows the automatic updating of the scan data for selected machines. So you no longer need to update each machine manually, just configure it to auto update and forget it, Network Inventory 5 will handle the rest.

EMCO Network Inventory 5 provides two different ways to auto update the scan data for selected machines.

### WAY1

**To automatically update selected machines perform the following steps:**

1. Expand the Networking node.
2. Now expand the required Network node.
3. Select the domain/workgroup that you want to operate.
4. Press the Ctrl key and select the machines that you want to process.
5. Right click any of the selected machines.
6. Select Auto Update->Include menu item from the pop-up menu.

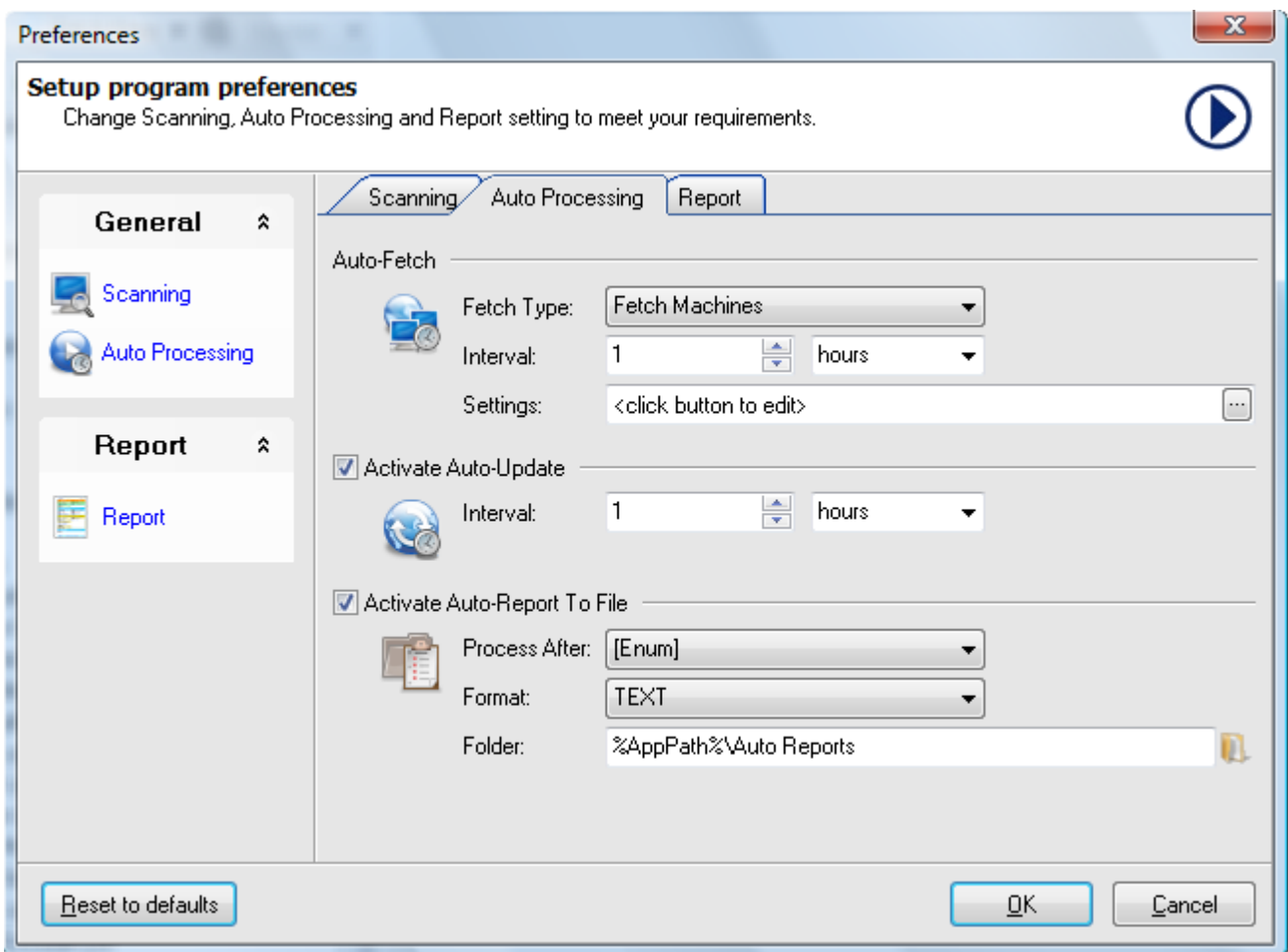


7. This will set Auto Update option for the selected machines.

## WAY II

To automatically update selected machines perform the following steps:

1. Expand the Networking node.
2. Now expand the required Network node.
3. Select the domain/workgroup that you want to operate.
4. Press the Ctrl key and select the machines that you want to process.
5. Switch to Options Tab.
6. Expand Auto Processing node.
7. Expand Auto Update node.
8. Check Active check box under Auto Update node.



9. Switch back to Management Tab.
10. This will set Auto Update option for the selected machines.

