

# Knowledgebase Article

---

## Updating Machines in Network Inventory

© Copyright 2001-2009 EMCO Software

## Updating Machines in Network Inventory

EMCO Network Inventory 5 provide updating machines feature that allows you to obtain the updated scan information for the selected machines. It's very useful when you already have a list of machines, and you want to fetch the updated information from those machines. And if any hardware or software update has been made to those machines, Network Inventory 5 will automatically fetch it form the selected machines. EMCO Network Inventory 5 enables you to specify a custom criteria. For example you can specify an option to scan machines that have not been scanned since specified date.

### EMCO Network Inventory 5 provides following options to updated machines data from your network

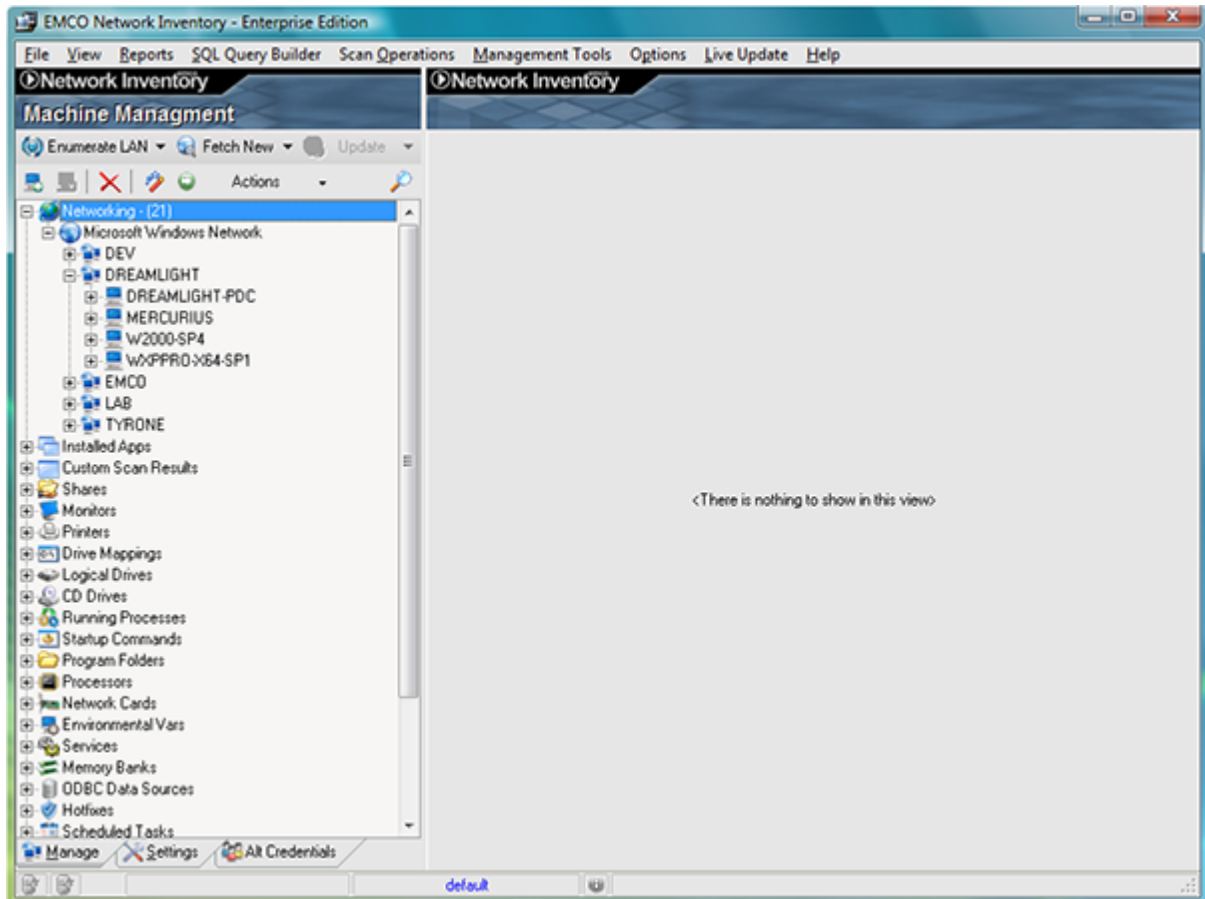
- ▣ Update Selected Machines
- ▣ Update Scan Age > 30 days
- ▣ Update Custom

### Update Selected Machines

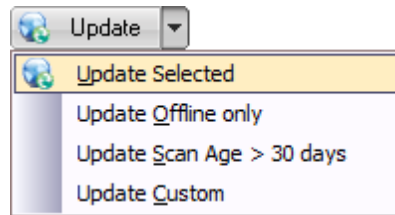
EMCO Network Inventory 5 allows you to update selected machines data. All you need is to selected machines you want to update and perform the update operation.

#### To update the selected machines perform the following steps:

1. Expand the Networking node.
2. Expand the Domain/Workgroup node.
3. Press the Ctrl key and keep it pressed and select the machines you want to update.



- Click Update button or click down arrow shown on the right of the Update button and select Update Selected from the pop-up menu.



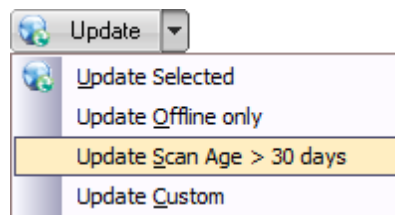
- The scanning process will now begin.
- This will fetch updated information from the selected machines.

### Update Scan Age > 30 days

EMCO Network Inventory 5 allows you to scan machine that have not been scanned for last 30 days.

**To update machines data with scan age greater then 30 days perform the following steps:**

- Expand the Networking node.
- Select a Domain/Workgroup that you want to process (if you want to process all domains/workgroups skip this step and select Microsoft Windows network node).



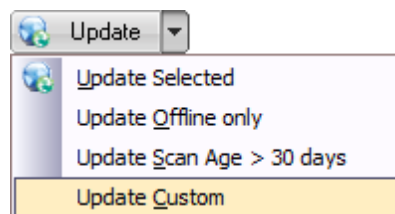
- Click down arrow shown on the right of the Update button and select Update Scan Age > 30 days from the pop-up menu.
- The scanning process will now begin.
- This will fetch updated information from all machines that have not been scanned for over 30 or more days.

### Update Custom

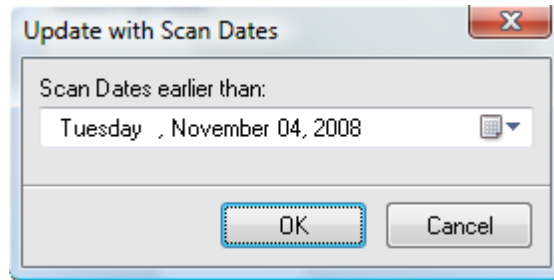
EMCO Network Inventory 5 allows you to specify a custom update criteria. For example you can specify an option to scan machines that have not been scanned since specified date.

**To update machines with custom update option perform the following steps:**

- Expand the Networking node.
- Select a Domain/Workgroup that you want to process (if you want to process all domains/workgroups skip this step and select Microsoft Windows network node).
- Click down arrow shown on the right of the Update button and click Update Custom from the pop-up menu.



4. Update With Scan Dates dialog appears on the screen.
5. Select the required date.



6. Click OK button
7. The scanning process will now begin.
8. This will fetch updated information form all machines that have not been scanned since the selected date.