

# Knowledgebase Article

---

## Running NI 5.x on a Machine having WinXP SP2

© Copyright 2001-2009 EMCO Software

## Running NI 5 on a Machine having WinXP SP2

If you want to run EMCO Network Inventory 5 on a Windows XP machine having SP2 (Service Pack 2) installed you must read this tutorial before performing any scan operation, otherwise you might not be able to successfully audit your machines.

Windows XP Service Pack 2 comes up with a built in firewall option to minimize the chance of attacks on your machine. This also blocks all some ports on your machine. EMCO Network Inventory 5 uses some ports that must be opened so that it can connect to remote machines. So you will have to configure Firewall on a machine on which you want to install EMCO Network Inventory 5.

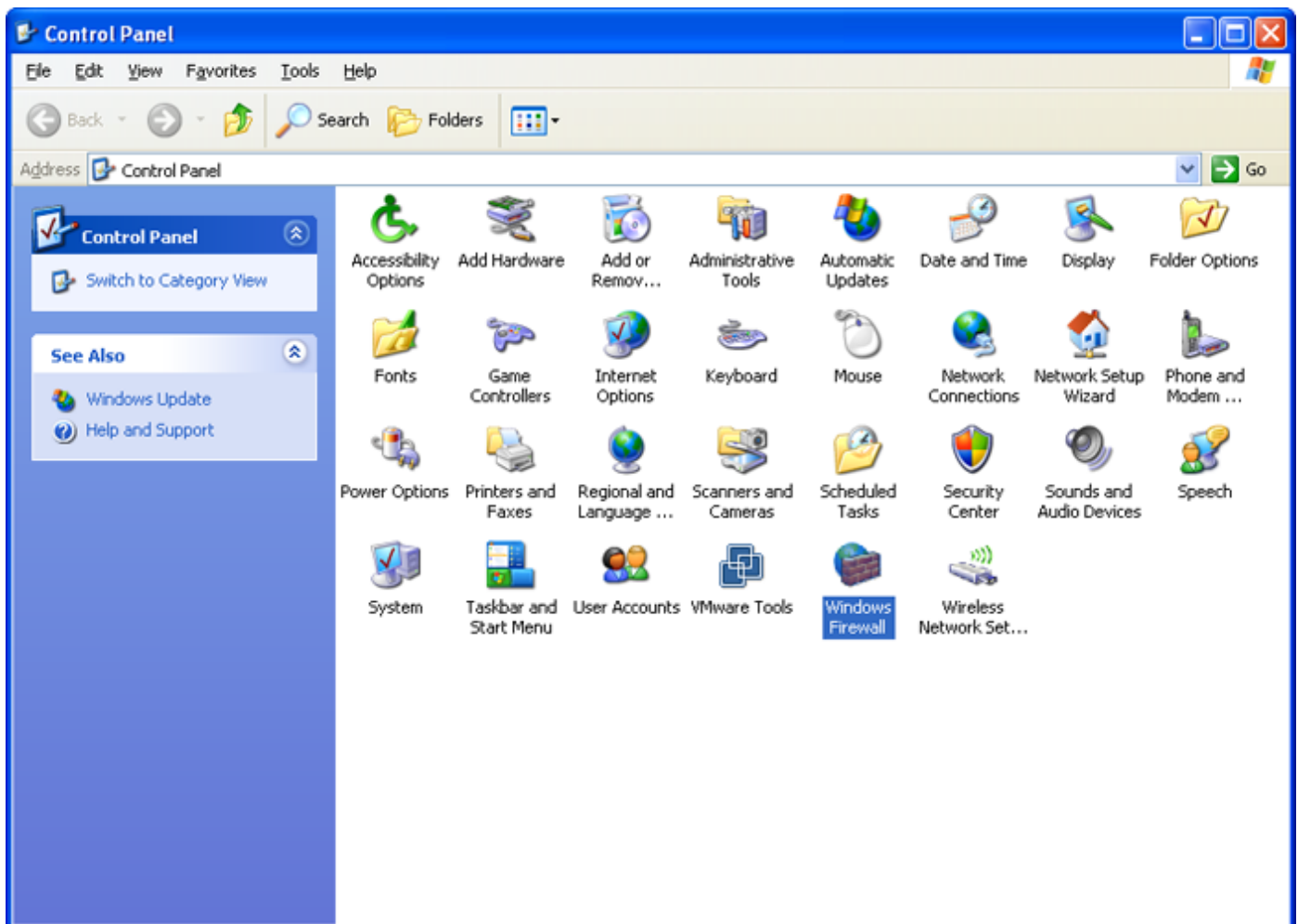
**To run EMCO Network Inventory 5 on your machine perform the following steps:**

1. Install EMCO Network Inventory 5 on your machines.
2. Configure Windows Firewall on your machines. In the next section we will discuss the required configuration of Firewall so that you can successfully audit your machines.

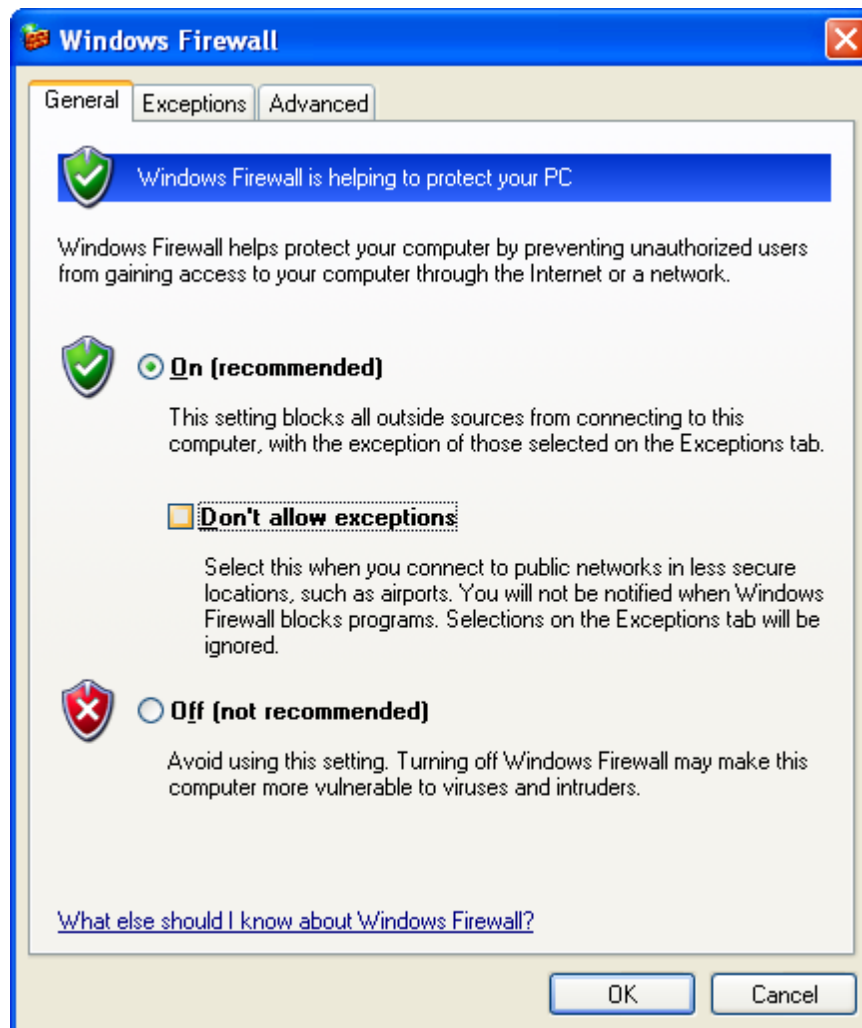
### Configure Firewall

**To configure Firewall on your machines perform the following steps:**

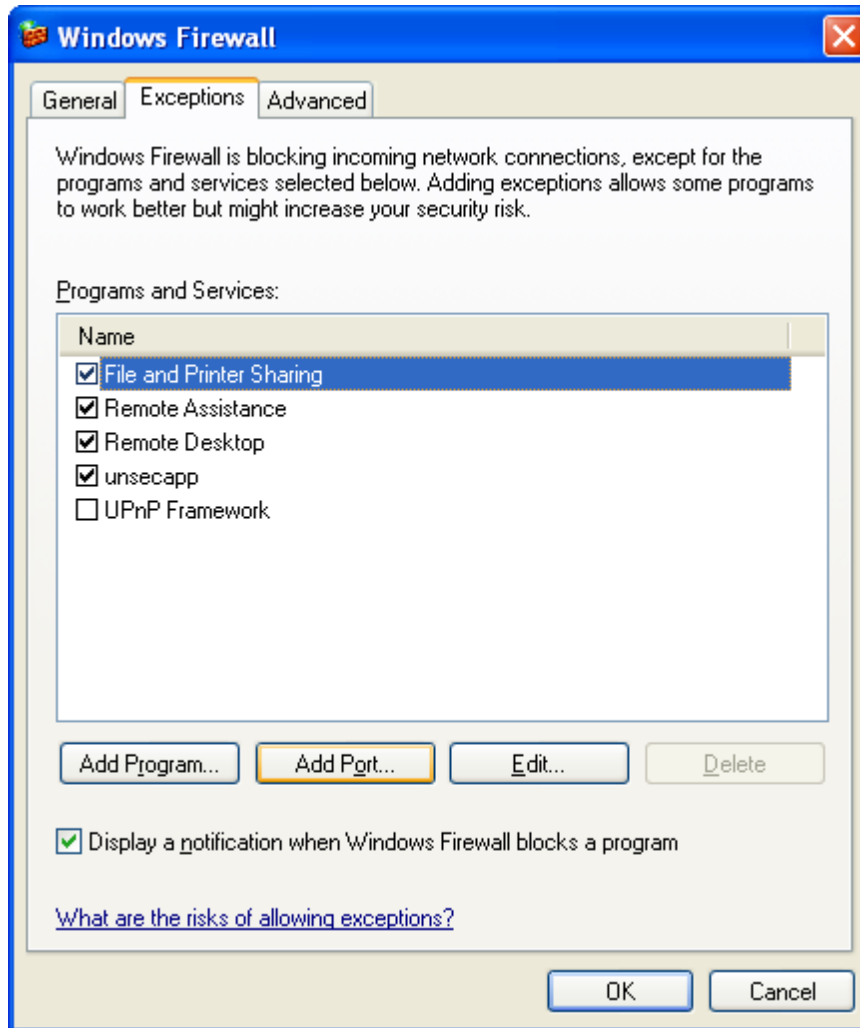
1. Move to Control Panel.
2. Double click the Windows Firewall icon located in the Control Panel to launch the Windows Firewall applet.



3. Windows Firewall dialog appears on the screen.
4. Switch to the General Tab.
5. If Firewall is turned on; make sure Don't allow exceptions check box is unchecked.

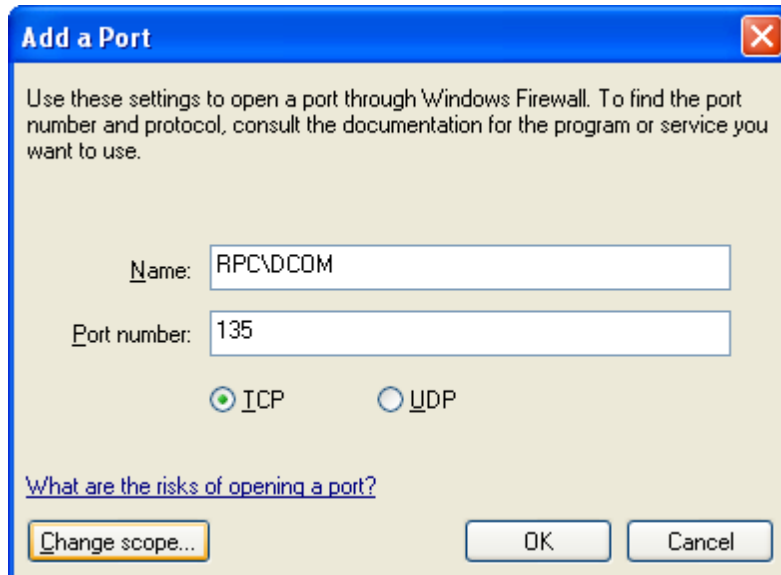


6. Switch to Exceptions tab.
7. Check the File and Printer Sharing check box.

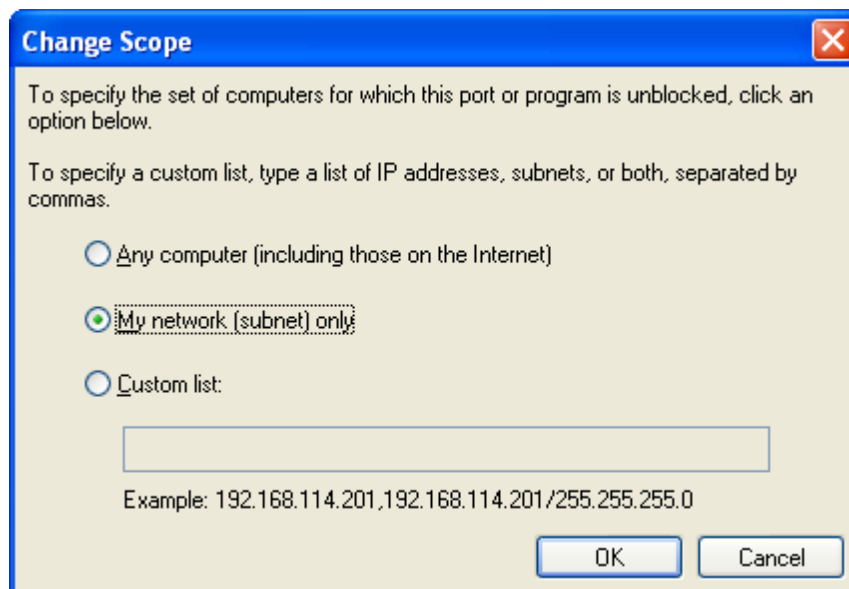


8. Click Add Port button.

9. Add a Port dialog appears on the screen.
10. Type RPC\DCOM in the Port Name field.
11. Type 135 in the Port Number field.
12. Click TCP radio button to select it.



13. Click Change Scope button to set the scope of this port.
14. Change Scope dialog appears on the screen.
15. Click the My network (subnet) only radio button.



16. Click OK button.

17. Please repeat the steps from 8 to 16 to add the following ports as well:

- a. 136
- b. 139
- c. 445

18. Click OK button again in Add a Port dialog.

19. Click OK button in the Windows Firewall dialog.

20. You are now ready to run EMCO Network Inventory 5 on this machine.

If you are still facing some problems while running EMCO Network Inventory 5; please see the system requirements mentioned at <http://emco.is/products/network-inventory/requirements.php> to make sure that your machine is capable of running EMCO Network Inventory 5.