

Knowledgebase Article

Reporting scan data from selected machines in NI

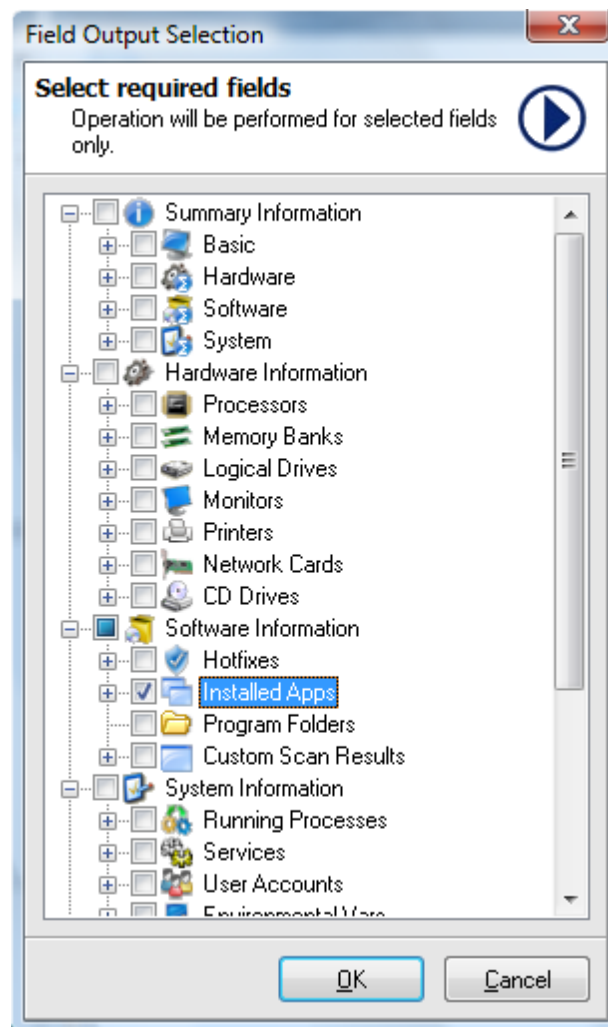
© Copyright 2001-2009 EMCO Software

Reporting scan data from selected machines in NI

This tutorial we will tell you how to report the scan data from the selected machines to screen.

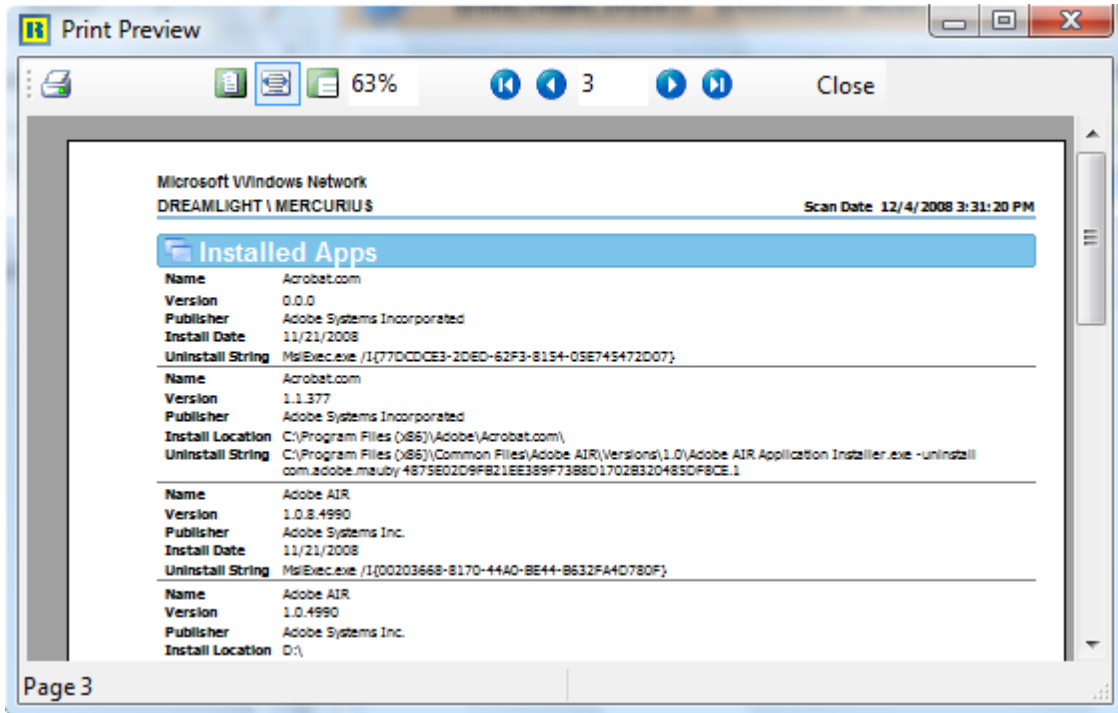
To report scan data from selected machines perform the following steps:

1. Expand the Networking node.
2. Now expand the required Network node.
3. Select the domain/workgroup that you want to operate.
4. Press the Ctrl key and select the machines that you want to process.
5. Right click any of the selected machines.
6. Select Report Selected - To Screen menu item from the pop-up menu.
7. Output Selection dialog appears on the screen.
8. Select the required fields by checking their corresponding check boxes.



9. Click OK button.

10. This will generate the report with selected information on your screen.



11. Click Print button if you want to printout your report.

12. This will print your report