

# Knowledgebase Article

---

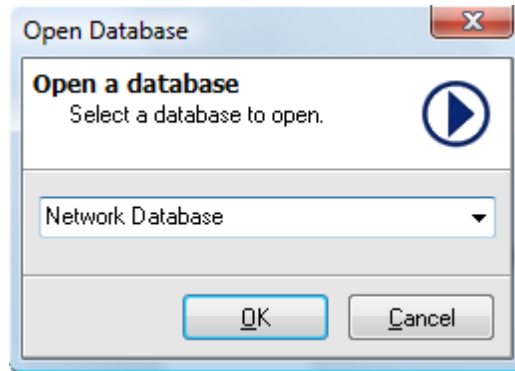
## Opening Database in Network Inventory

© Copyright 2001-2009 EMCO Software

## Opening Database in Network Inventory

**To open a database in EMCO Network Inventory 5, perform the following steps:**

1. Select Open Database menu item under File menu.
2. Open Database dialog appears on the screen
3. Select a database name from the Database drop-down list.



4. Click OK button.
5. This will open the selected database.