

Knowledgebase Article

Lock Unlock machine feature in NI

© Copyright 2001-2009 EMCO Software

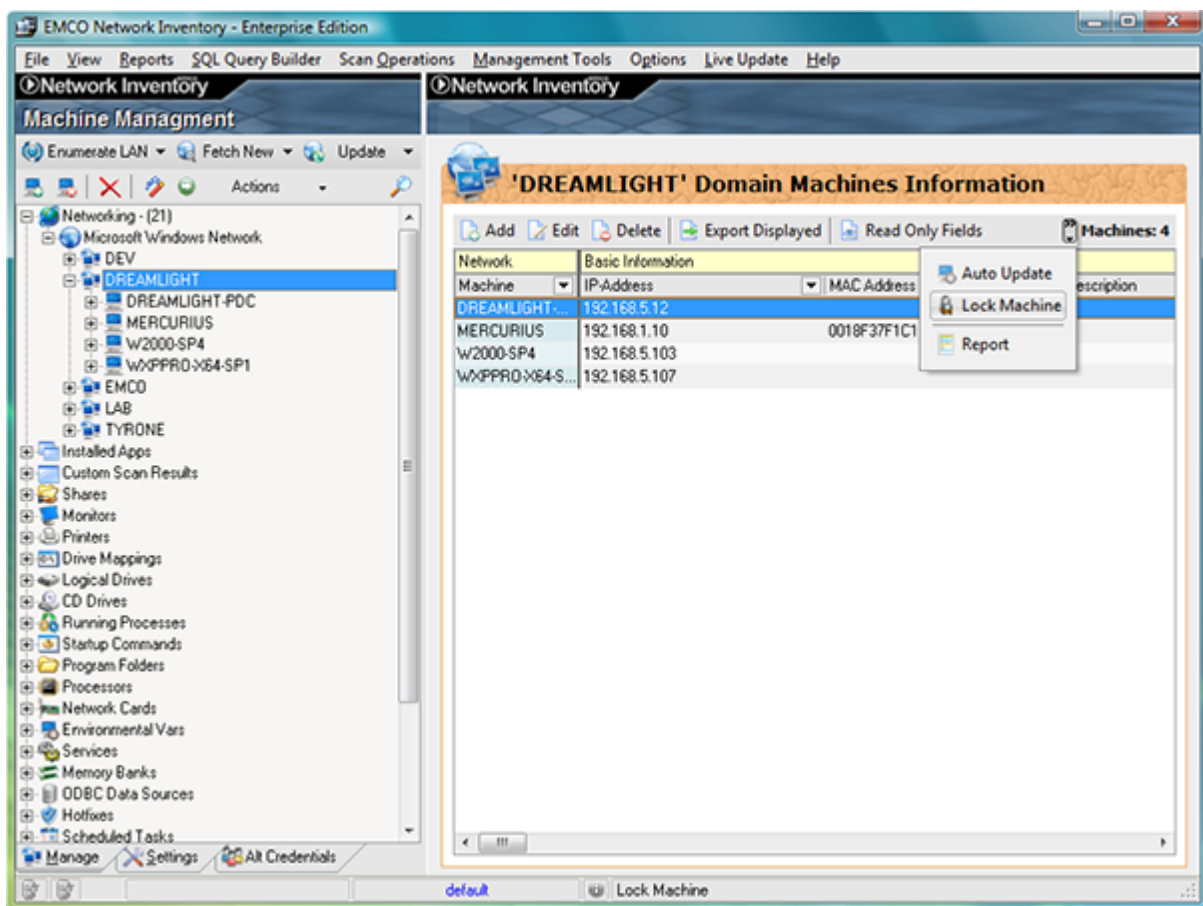
Lock Unlock machine feature in NI

Lock machine feature in Network Inventory 5

EMCO Network Inventory 5 allows you to lock the machines you don't want to be updated when a scan operation is performed on your network.

To lock machines in EMCO Network Inventory 5 perform the following steps:

1. Expand the networking node shown under the machines tree
2. Expand the required network and select the desired workgroup.
3. This will display all available machines in the Data tab.
4. Right click the machine you want to lock.
5. Select Lock menu item from the pop-up menu.

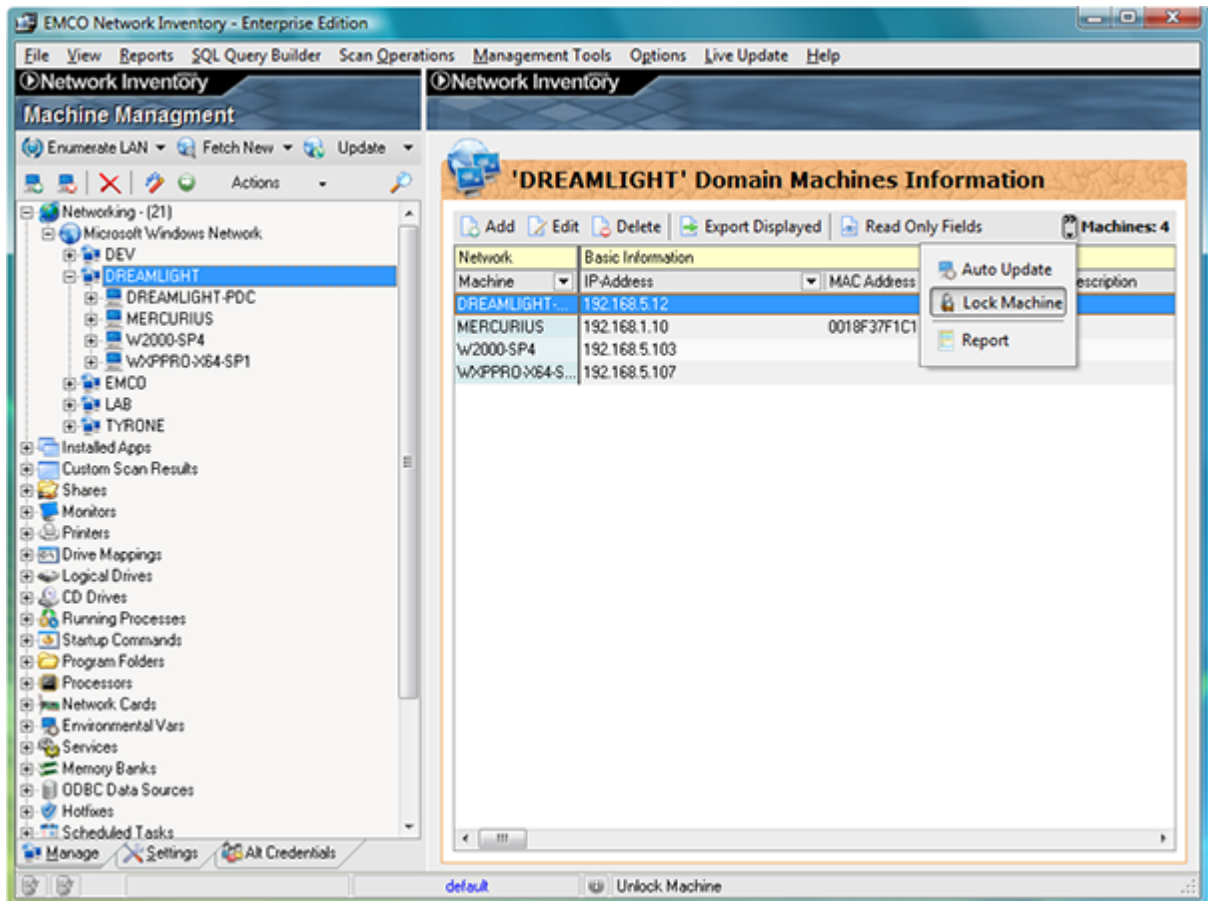


6. This will lock the selected machine and now when a scan operation is performed on your network it will not fetch information for the locked machines.

Unlock machine feature in Network Inventory 5

To unlock machines in EMCO Network Inventory 5 perform the following steps:

1. Expand the networking node shown under the machines tree
2. Expand the required network and select the desired workgroup.
3. This will display all available machines in the Data tab.
4. Right click the machine that you want to lock.
5. Select Unlock menu item from the pop-up menu.



6. This will unlock the selected machine.