

# Knowledgebase Article

---

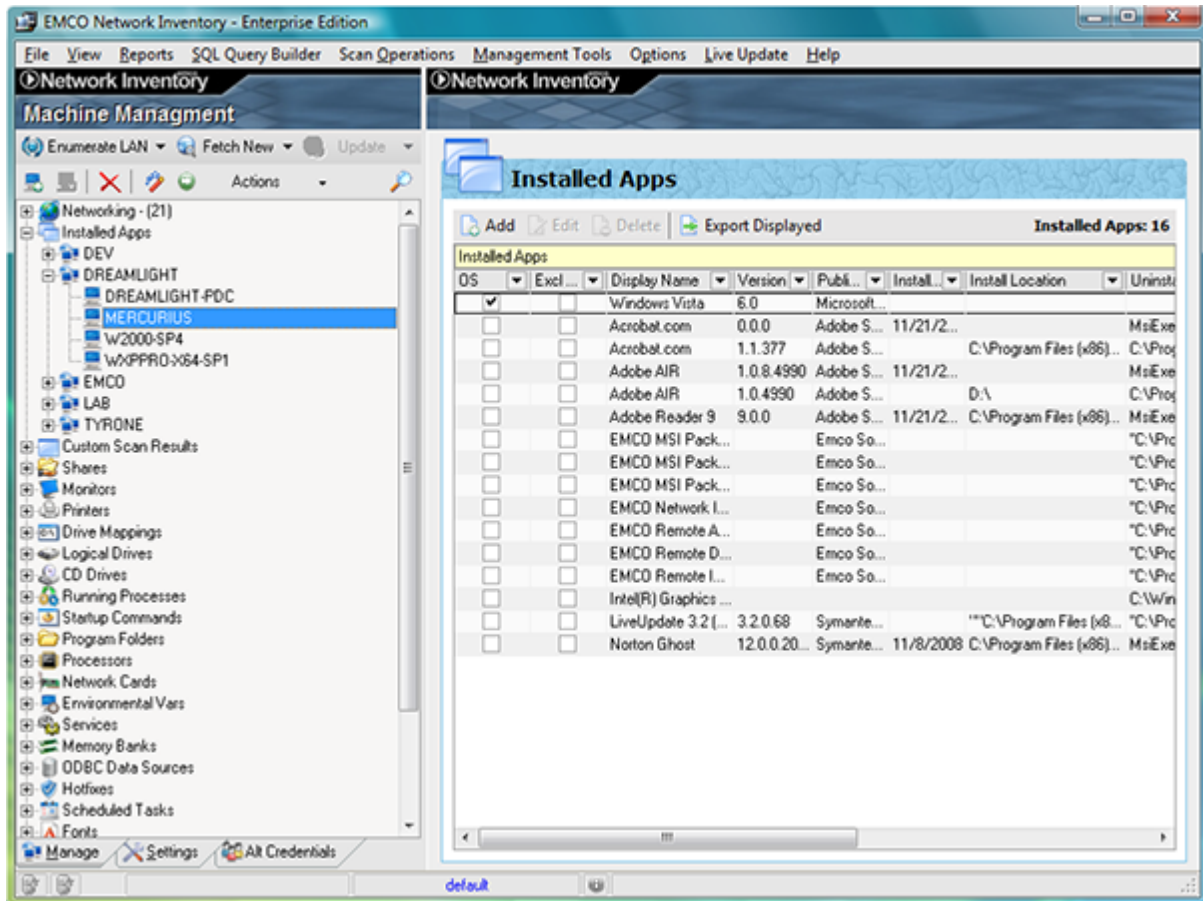
## How to use Installed Applications Count feature

© Copyright 2001-2009 EMCO Software

## How to use Installed Applications Count feature

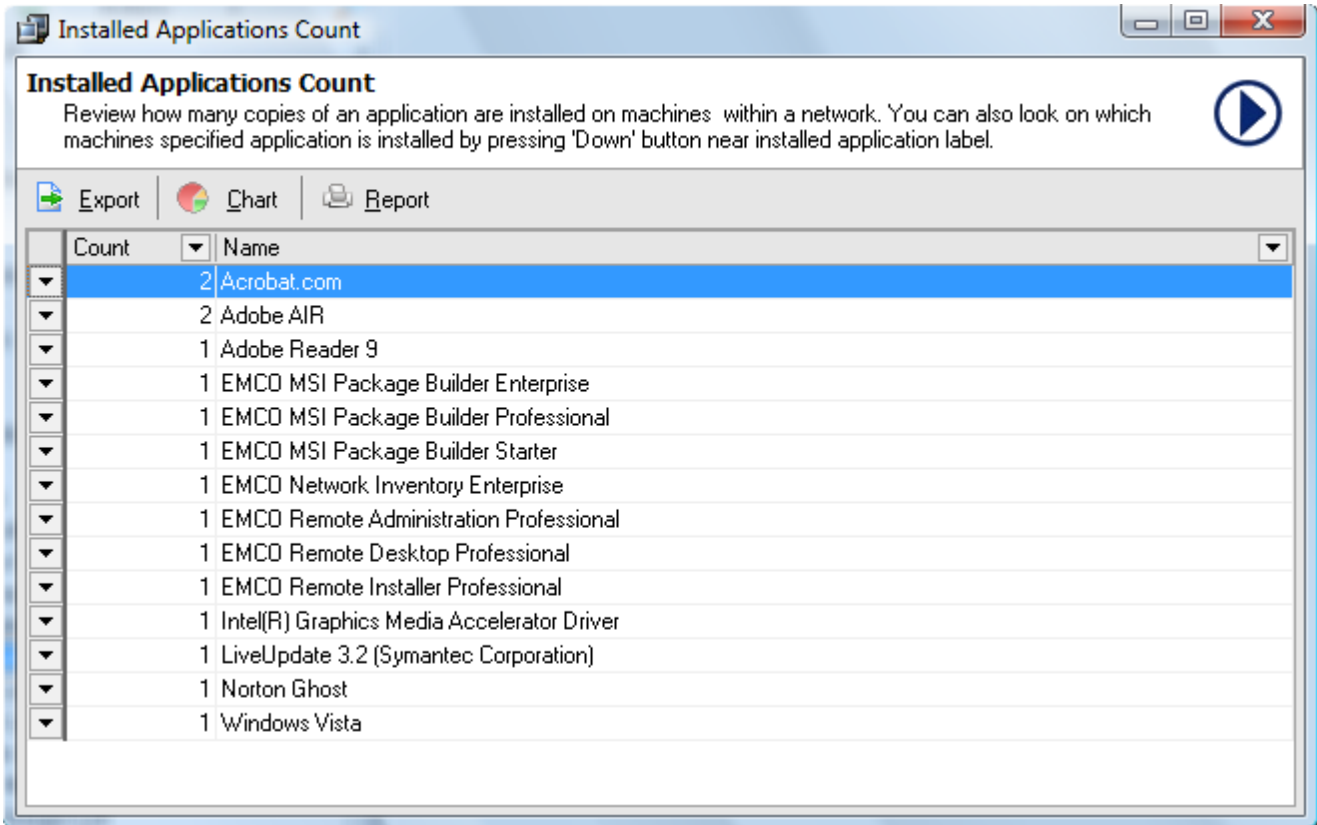
Before you scan your network for both software and hardware informations, please make sure you have checked the required info from settings tab.

1. Settings tab.
2. Next scan the whole network
3. Results of the scanning process
4. Results after scanning the entire network, and Installed Apps node selected.



5. After scanning the network for both software and hardware inventory data we can start using the Installed Applications Count feature. To access this feature click on the Management Tools – Installed Applications and open the Count Application dialog.

## 6. Installed Applications Count



7. You can both Chart and Report the applications count data.

8. If you want to see where the specific application is installed, click on the arrow sign on the left and you will get this info.

