

Knowledgebase Article

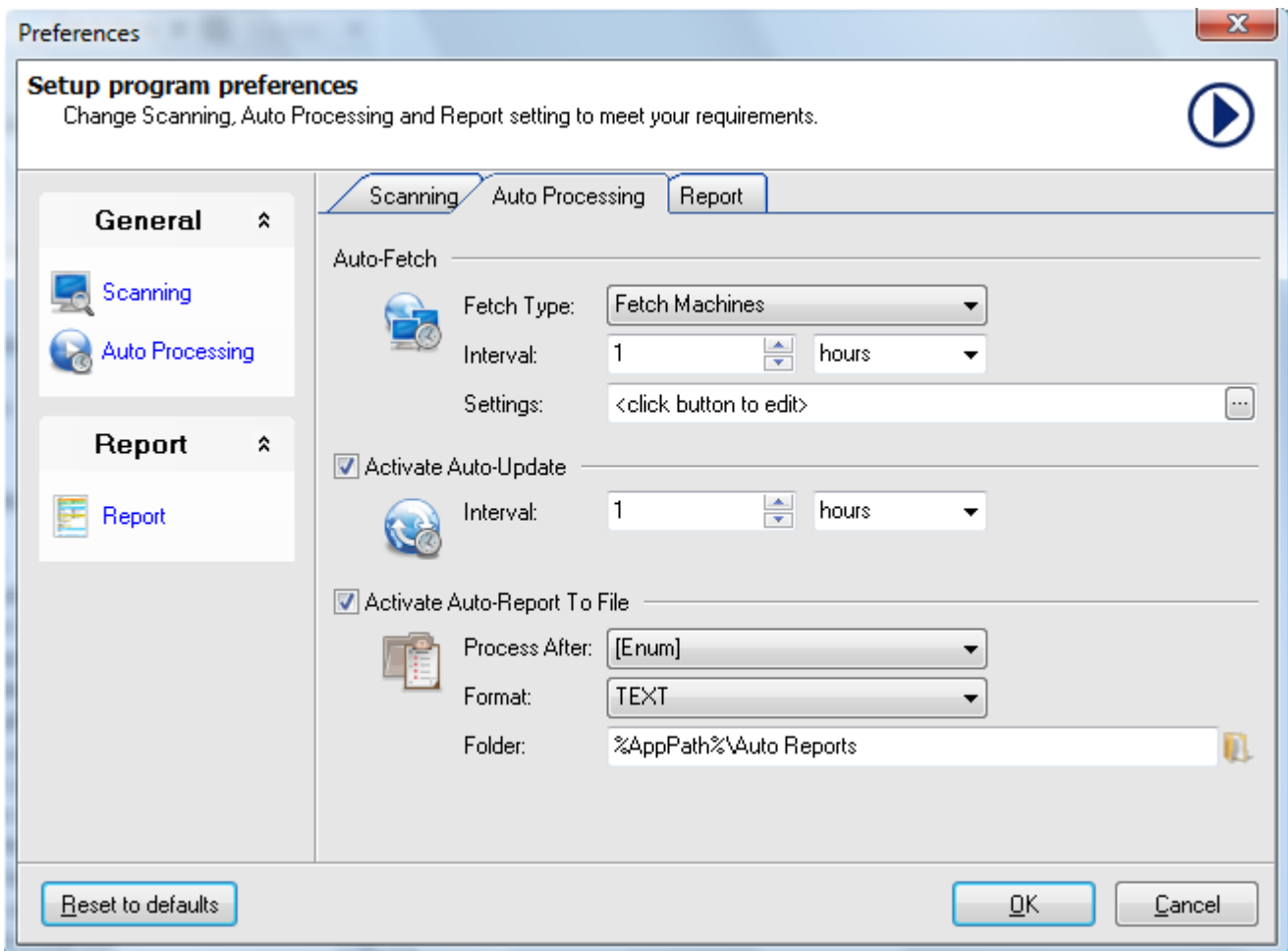
How to Auto-Fetch machines via IP-Range in NI

© Copyright 2001-2009 EMCO Software

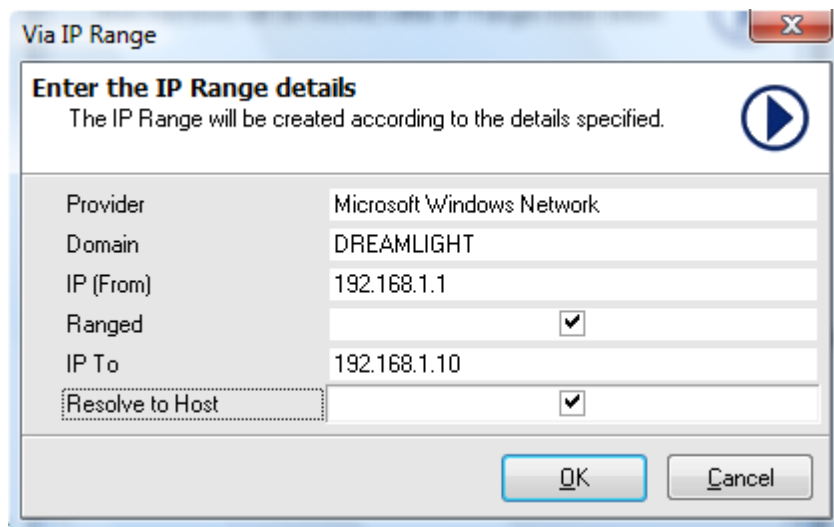
How to Auto-Fetch machines via IP-Range in NI

To Auto Fetch machines via IP range perform the following features:

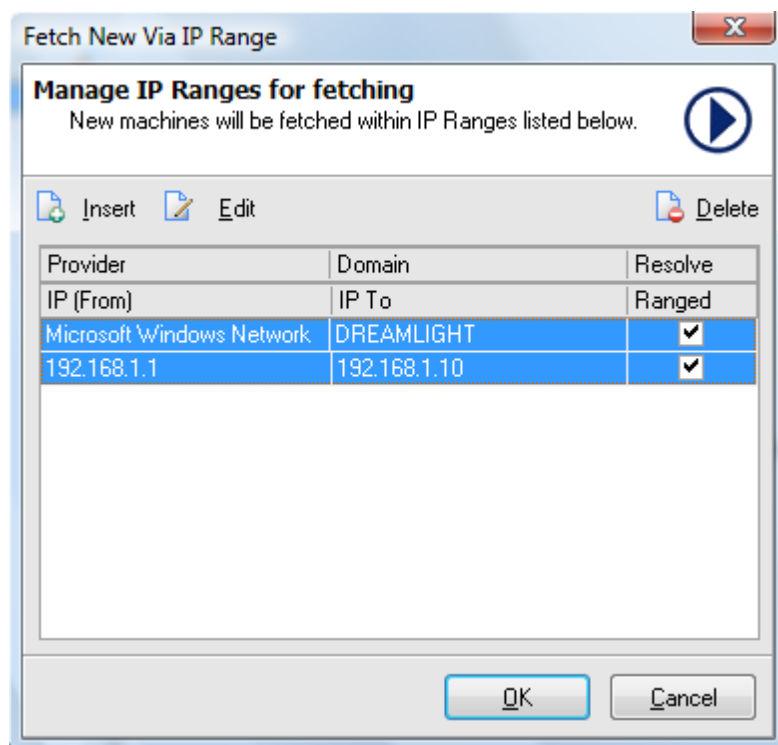
1. Switch to Options Tab.
2. Expand Auto Processing node.
3. Expand Auto Fetch node.
4. Select required fetch type from the Fetch Kind drop-down list.
5. Select your required interval.
6. Select your required interval type from the drop-down list.



7. Click Setting button.
8. Auto Fetch Via IPRange dialog appears on the screen.
9. Click Insert button.
10. Via IPRange dialog appears on the screen.
11. Select the required provider from the Provider drop-down list.
12. Select the required domain from the Domain drop-down list.
13. Select the starting IP in the From IP field.
14. For a ranged scan check Ranged check box.
15. Type the ending IP in the IP To field.
16. Check Resolve to host check box.



17. Click Ok button on a Via IPRange dialog.



18. Click Ok button on Auto Fetch Via IPRange dialog .
19. Switch back to Manage tab.
20. Now you have successfully enabled Auto Fetch machines via IP Range.