

# Knowledgebase Article

---

## Exporting scan data from selected machines in NI

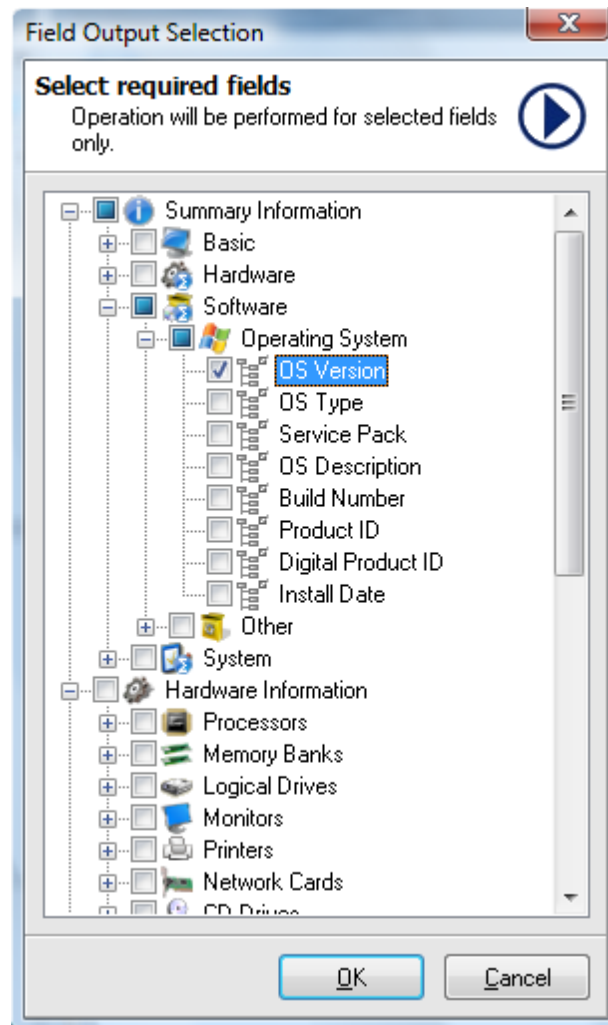
© Copyright 2001-2009 EMCO Software

## Exporting scan data from the selected machines in NI

In this tutorial we will tell you how to export the scan data from the selected machines to a file on your hard disk.

**To export scan data from selected machines perform the following steps:**

1. Expand the **Networking** node.
2. Now expand the required **Network** node.
3. Select the domain/workgroup that you want to operate.
4. Press the Ctrl key and select the machines that you want to process.
5. Right click any of the selected machines.
6. Select **Report Selected** menu item from the pop-up menu.
7. Click **To File** menu item from the pop-up menu.
8. **Field Output Selection** dialog appears on the screen.
9. Check required fields by checking their corresponding check boxes.



10. Click **OK** button.

11. File save dialog appears on the screen.
12. Type in the name of the file in the **File Name** field.
13. Select the required file type.
14. Click **Save** button to save the file.
15. This will save your selected data on the specified location.