

Knowledgebase Article

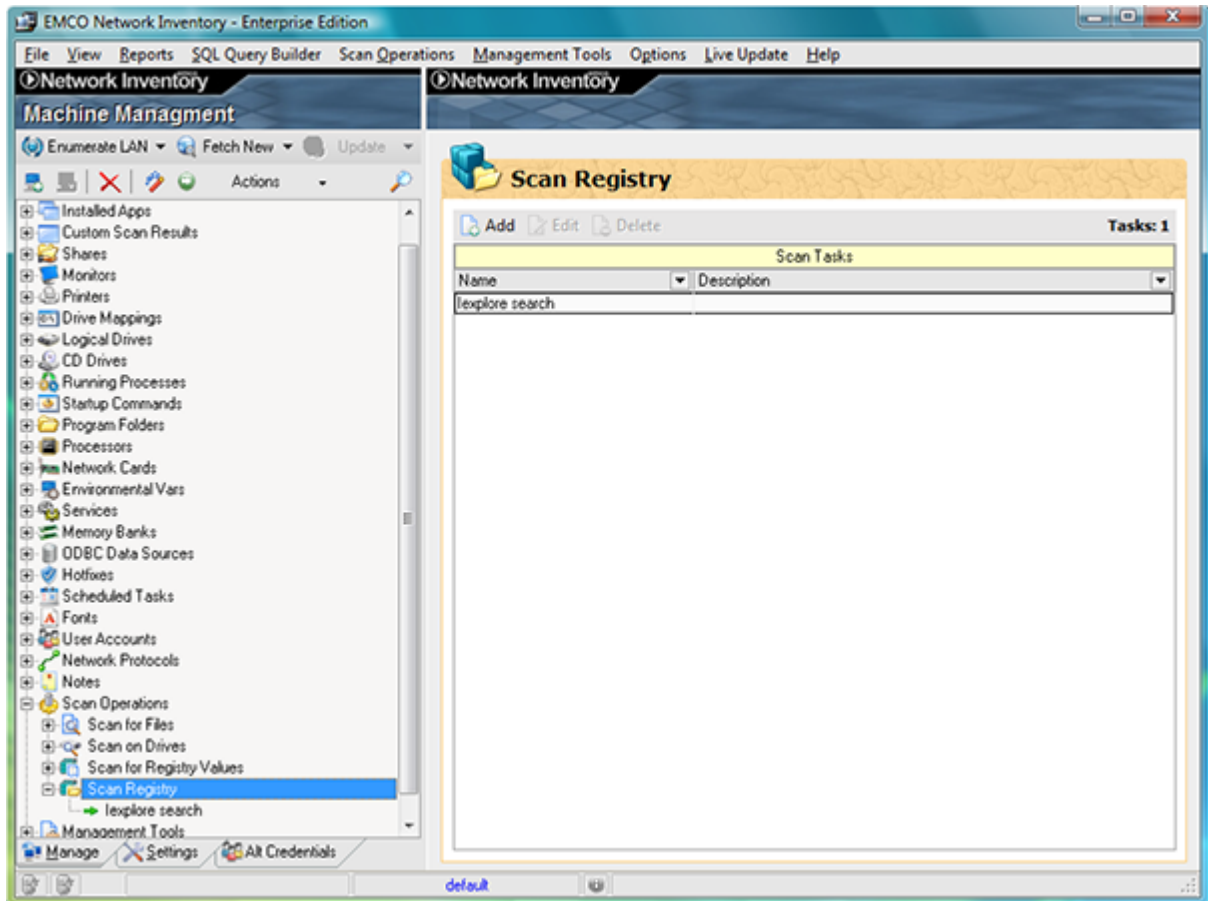
Creating Scan Registry Operation

© Copyright 2001-2009 EMCO Software

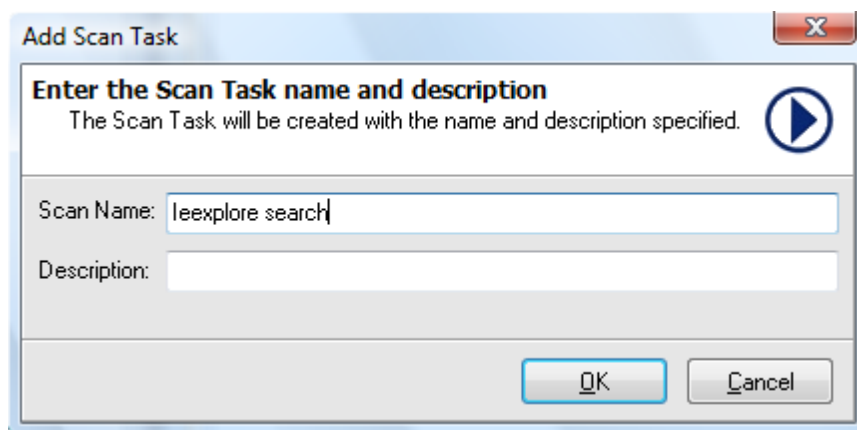
Creating Scan Registry Operation

To create Scan Registry Operation in Network Inventory 5 perform the following steps:

1. Expand the **Operations** node.
2. Select **Scan Registry** node.
3. Click **Add** Item button.

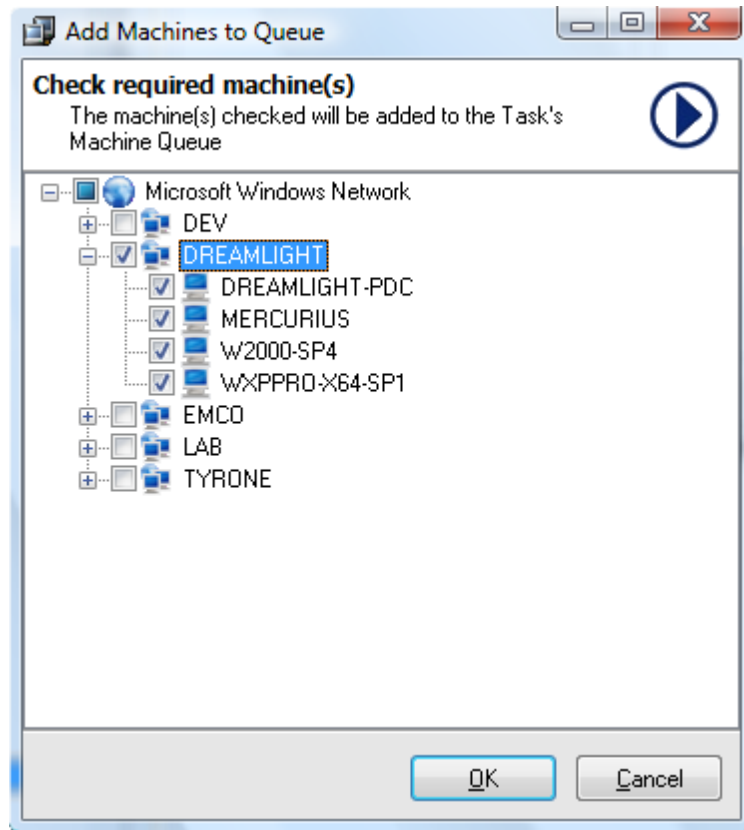


4. Operations JobDetails dialog appears on the screen.
5. Type the job name in the Job Name field.
6. Type the job description in the Description field.



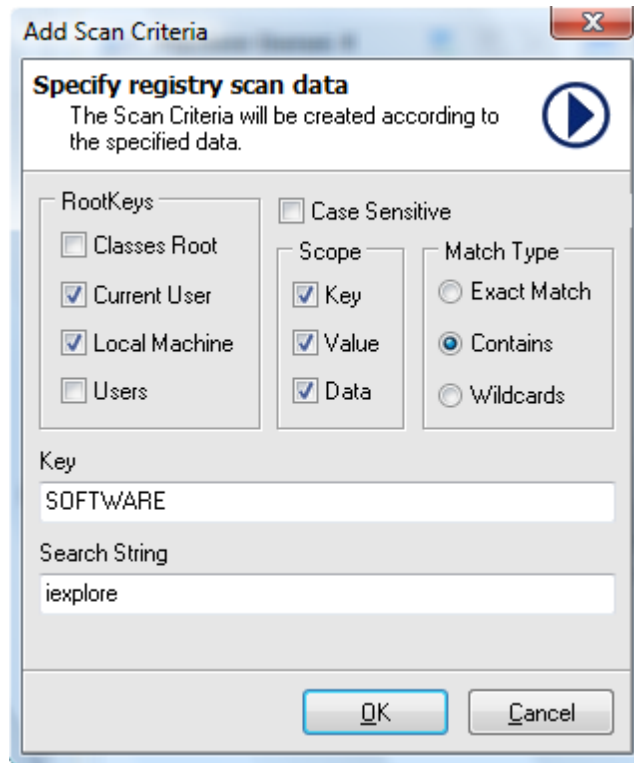
7. Click **Ok** button.

8. The added job appears in the jobs list.
9. Expand the Scan Registry node.
10. Select your required job.
11. Click Add Machine button shown on the data tab.
12. Drag and drop machines dialog appears on the screen.



13. Press the Ctrl key and click the machines that you want to process form the machine tree.
14. Click any of the selected machines and drag it to machines list area.
15. The added machines appear in the machines list.

16. Click New Record button.
17. Search Criteria dialog appears on the screen.
18. Select the required root keys, by checking the corresponding check box under Root Keys.
19. Check Case Sensitive check box to make it case sensitive.
20. Select the the scan Scope.
21. Select the required Match Type.
22. Type the required key in the Key field.
23. Type the search string the Search Sting field.



24. Click **Ok** button.

25. The added record appears in the records list.
26. Click **Run Now** button.
27. Click the **Last Run** node shown under the selected job node.
28. Its details will appear in the Data Tab.
29. Expand the required machine node to see the details for the selected job.

