

Knowledgebase Article

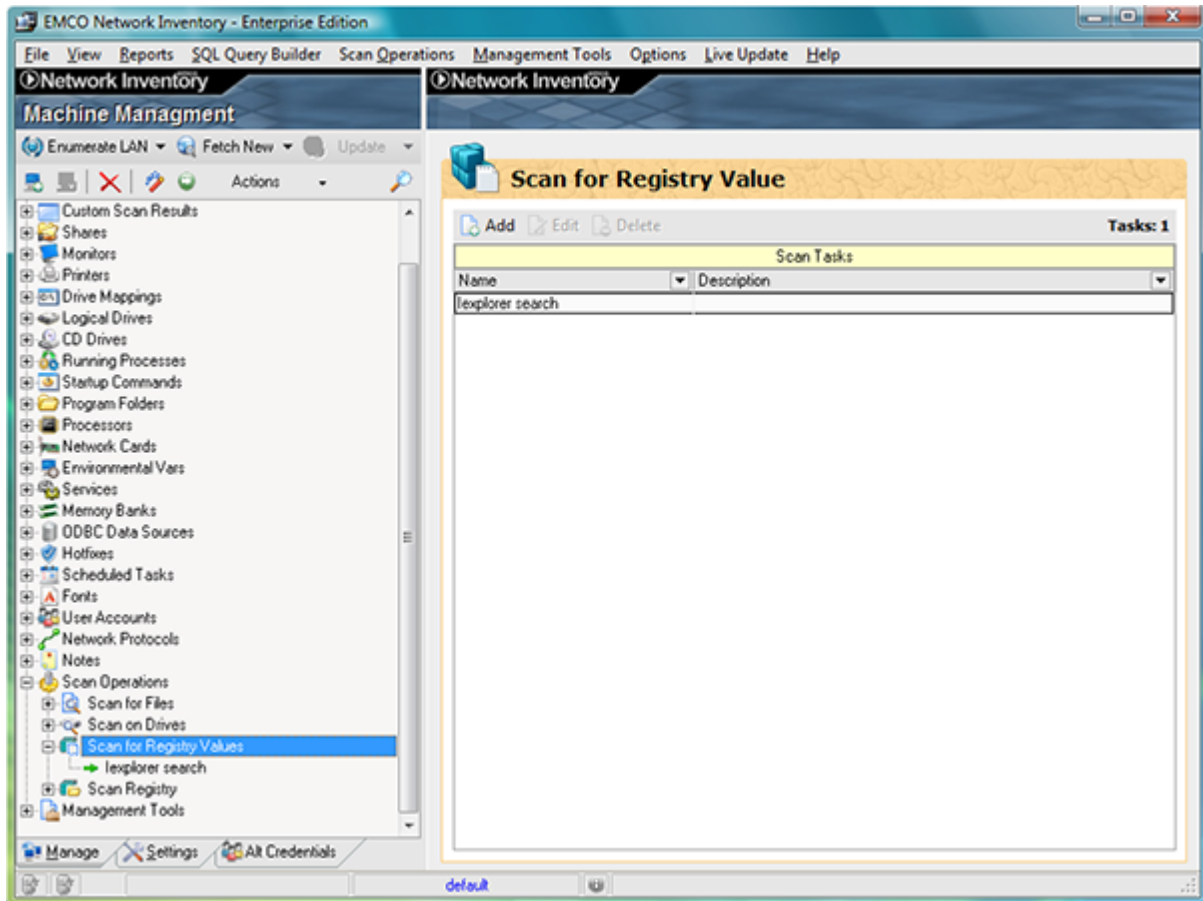
Creating Registry Value Operation

© Copyright 2001-2009 EMCO Software

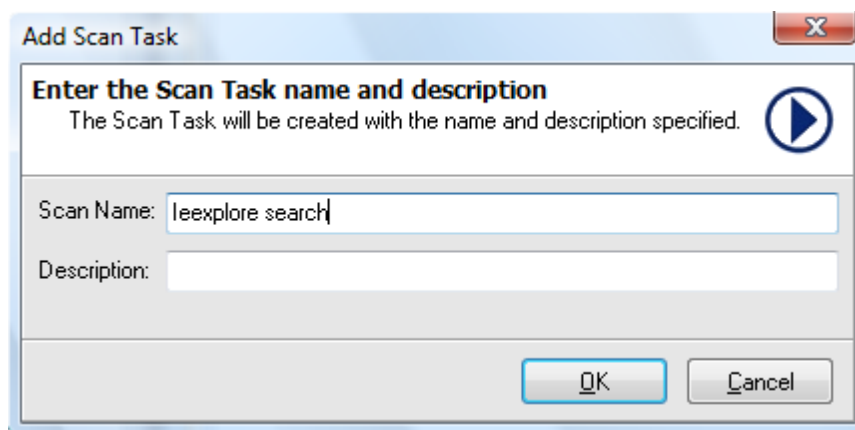
Creating Registry Value Operation

To create **Registry Value Operation** in **Network Inventory 5** perform the following steps:

1. Expand the **Operations** node.
2. Select **Registry Value** node.
3. Click **Add** Item button.

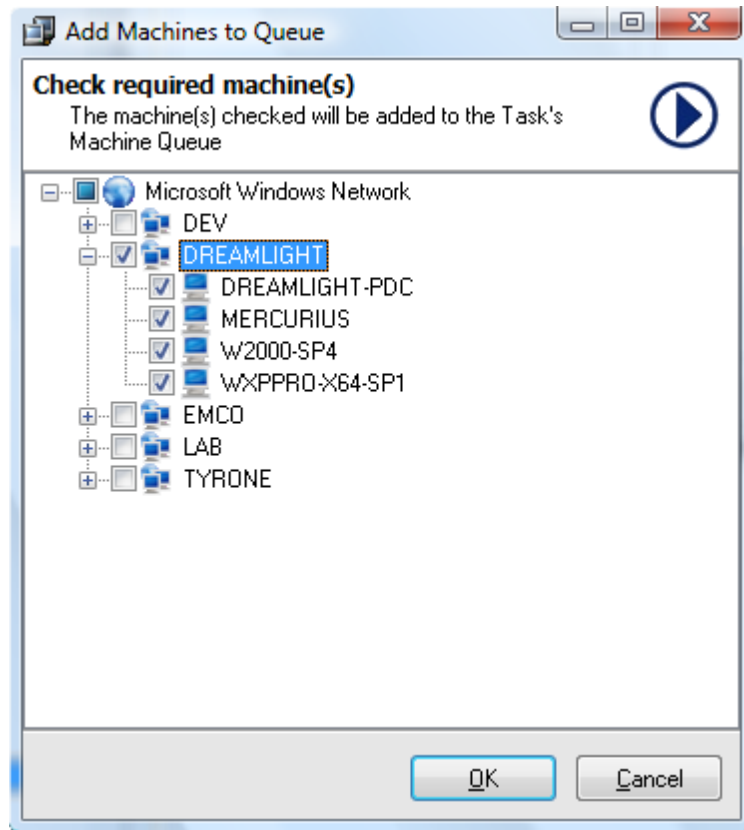


4. Operations **Job Details** dialog appears on the screen.
5. Type the job name in the **Job Name** field.
6. Type the job description in the **Description** field.

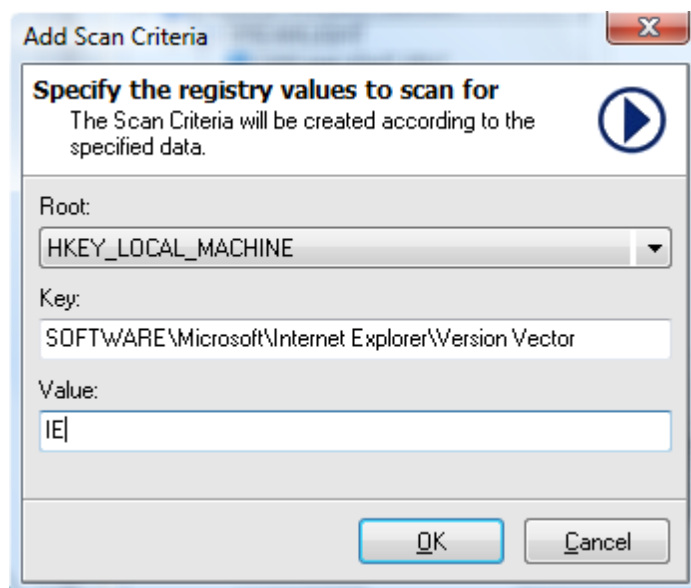


7. Click **Ok** button.

8. The added job appears in the jobs list.
9. Expand the **Registry Value** node.
10. Select the required job.
11. Click **Add Machine** button shown on the data tab.
12. Drag and drop machines dialog appears on the screen.



13. Press the Ctrl key and click the machines that you want to process form the machine tree.
14. Click any of the selected machines and drag it to machines list area.
15. The added machines appear in the machines list.
16. Select the required root key from the Root drop-down list.



17. Type the required registry key in the Key field.
18. Type the value of the key in the Value field.

19. Click **Run Now** button.
20. Click the **Last Run** node shown under the selected job node.
21. Its details will appear in the Data Tab.
22. Expand the required machine node to see the details for the selected job.

