

Knowledgebase Article

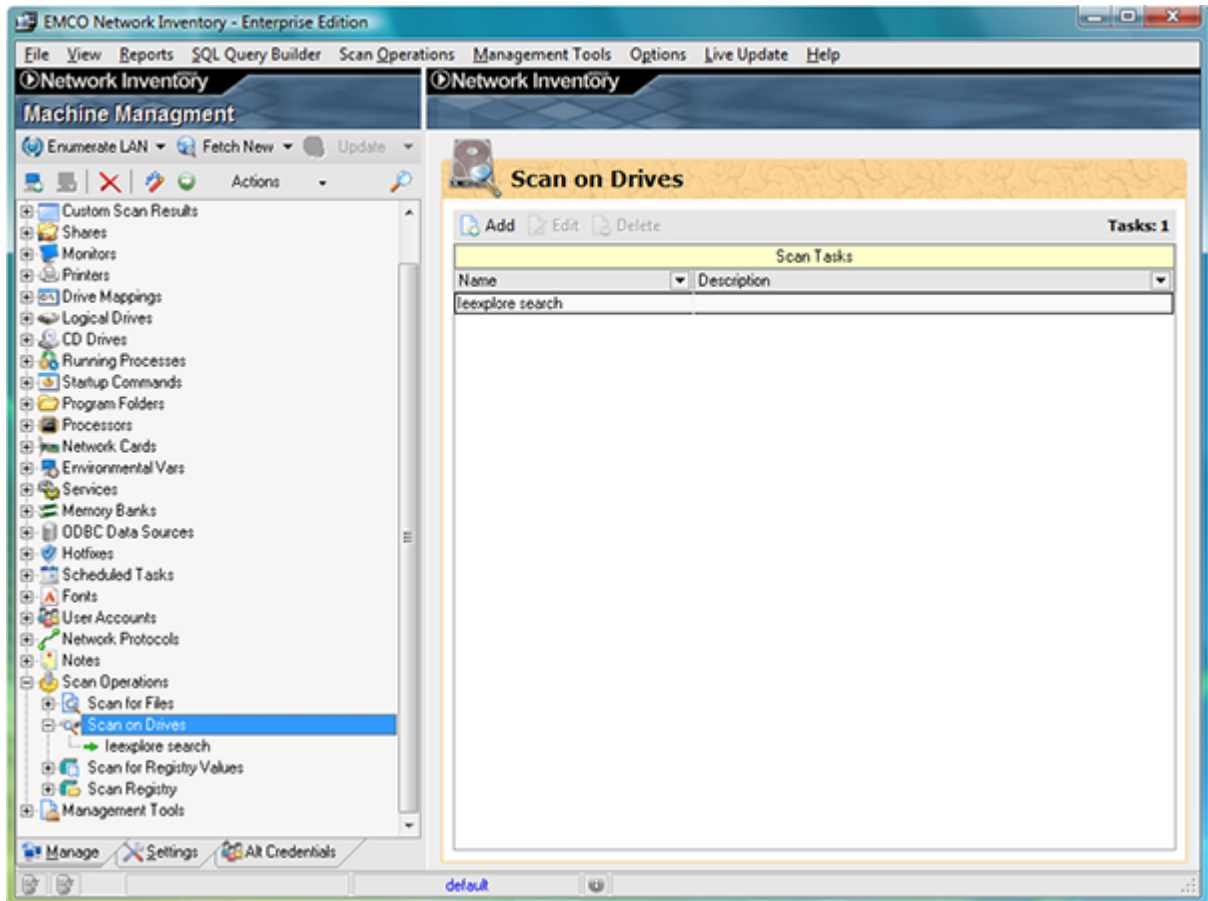
Creating Disk Scan Operation

© Copyright 2001-2009 EMCO Software

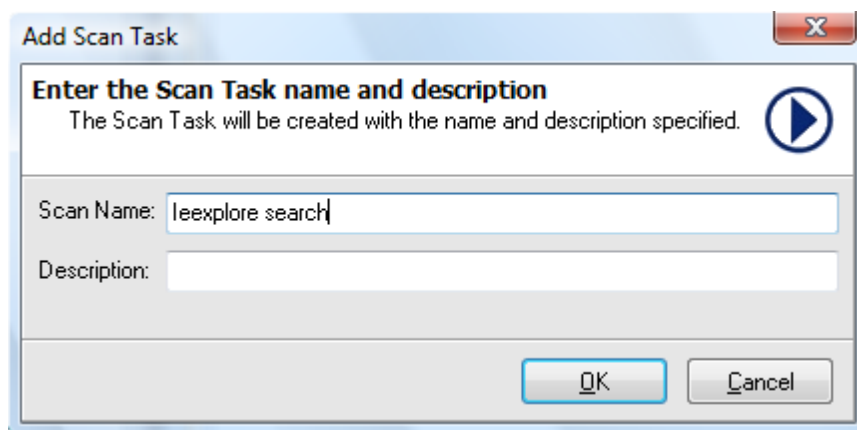
Creating Disk Scan Operation

To create **Version Enumeration Operation in Network Inventory 5** perform the following steps:

1. Expand the **Operations** node.
2. Select **Scan on Drives** node.
3. Click **Add** Item button.

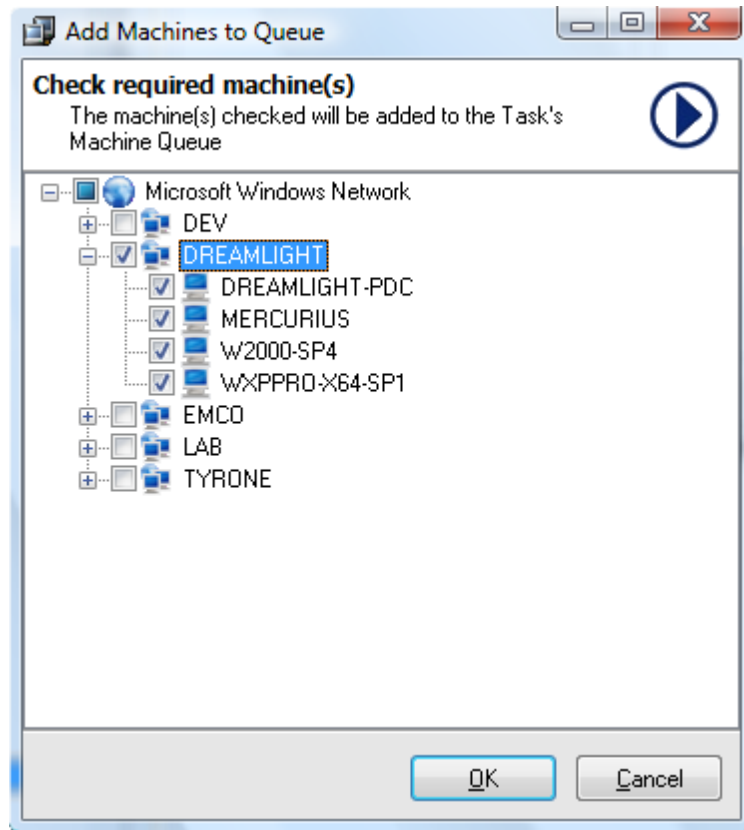


4. Operations **Add Scan Task** dialog appears on the screen.
5. Type the name in the **Scan Name** field.
6. Type the description in the **Description** field.



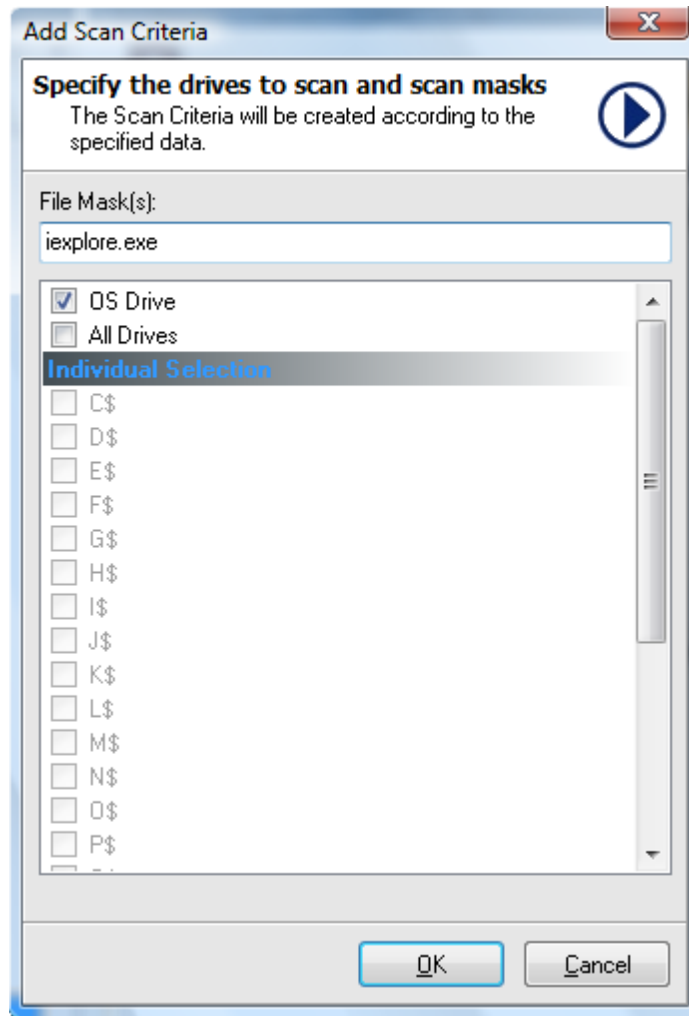
7. Click **Ok** button.

8. The added task appears in the task list.
9. Expand the **Scan on Drives** node.
10. Select the required task.
11. Click **Add Machine** icon shown on the data tab.
12. Drag and drop machines dialog appears on the screen.



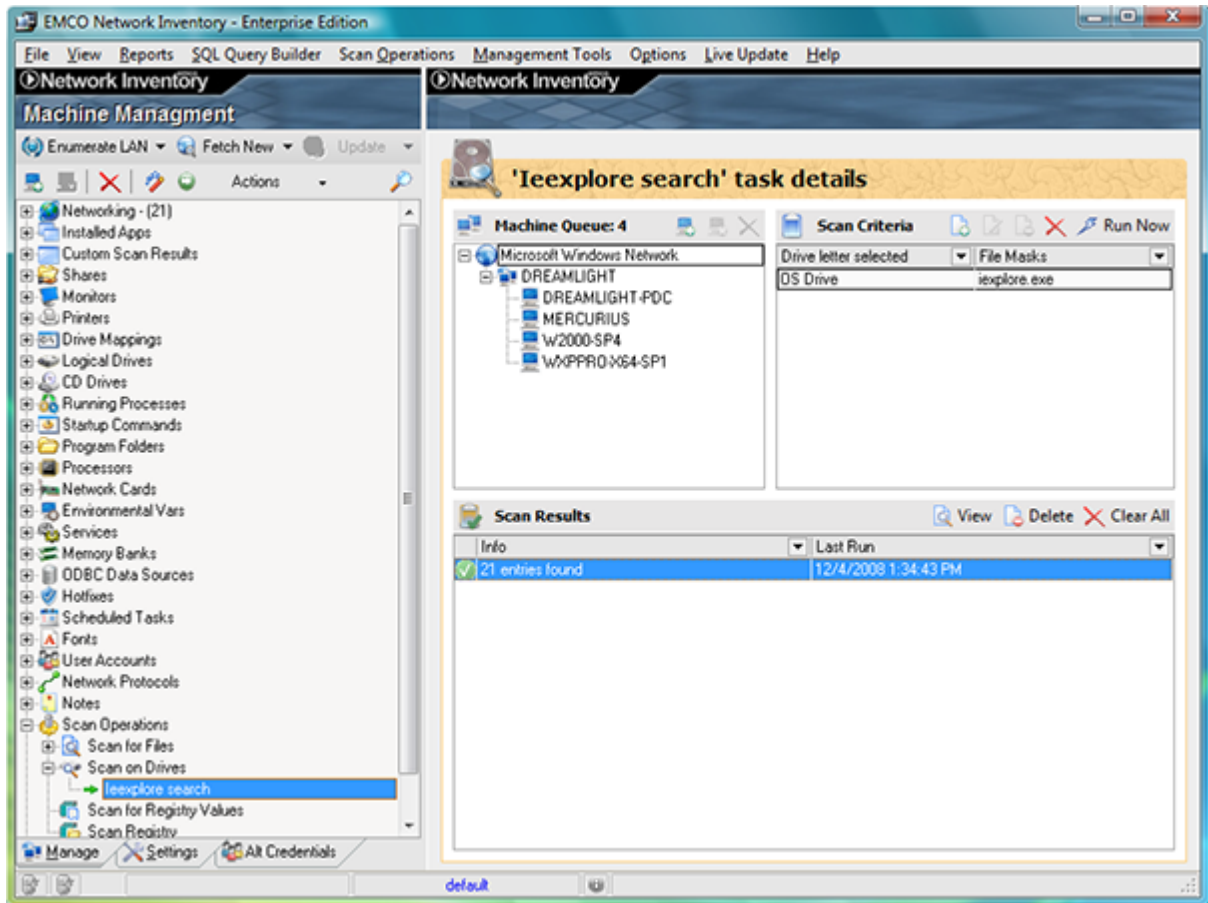
13. Press the Ctrl key and select the machines you want to process form the machine tree.
14. Click any of the selected machines and drag it to machines list area.
15. The added machines appear in the machines list.

16. Type the required file mask in the File Mask field.



17. Select the drives you want to process.

18. Click **Run Now** button.
19. Click the Last Run node shown under the selected job node.



20. Its details will appear in the Data Tab.
21. Expand the required machine node to see the details for the selected job.

View Scan results

View Scan results details

The detailed results of the Scan execution for each machine taking part in the operation are shown. The 'status' field shows the operation result and the 'description' field shows the additional information.

Provider Domain Machine

File Name Version Product N... File ... Path File Time St... Last Run

Provider : Microsoft Windows Network

Domain : DREAMLIGHT

Machine : MERCURIUS

File Name	Version	Product N...	File ...	Path	File Time St...	Last Run
iexplore.exe	7.00.6000.16386 ...	Windows® In...	701952	C:\Program Files\...	1/19/2008 10:0...	12/4/2008 1:34:...
iexplore.exe	7.00.6000.16386 ...	Windows® In...	625664	C:\Program Files ...	1/19/2008 9:33...	12/4/2008 1:34:...
iexplore.exe	7.00.6000.16386 ...	Windows® In...	675328	C:\Windows\win...	11/2/2006 1:15...	12/4/2008 1:34:...
iexplore.exe	7.00.6000.16386 ...	Windows® In...	623616	C:\Windows\win...	11/2/2006 11:4...	12/4/2008 1:34:...
iexplore.exe	7.00.6000.16681 ...	Windows® In...	701440	C:\Windows\win...	8/7/2008 3:33...	12/4/2008 1:34:...
iexplore.exe	7.00.6000.16681 ...	Windows® In...	625664	C:\Windows\win...	8/7/2008 3:33...	12/4/2008 1:34:...
iexplore.exe	7.00.6000.16711 ...	Windows® In...	701440	C:\Windows\win...	6/27/2008 6:04...	12/4/2008 1:34:...
iexplore.exe	7.00.6000.16711 ...	Windows® In...	625664	C:\Windows\win...	6/27/2008 5:54...	12/4/2008 1:34:...
iexplore.exe	7.00.6000.16757 ...	Windows® In...	709408	C:\Windows\win...	10/2/2008 10:1...	12/4/2008 1:34:...
iexplore.exe	7.00.6000.16757 ...	Windows® In...	633632	C:\Windows\win...	10/2/2008 5:50...	12/4/2008 1:34:...
iexplore.exe	7.00.6000.20823 ...	Windows® In...	701440	C:\Windows\win...	8/7/2008 3:33...	12/4/2008 1:34:...
iexplore.exe	7.00.6000.20823 ...	Windows® In...	625664	C:\Windows\win...	8/7/2008 3:33...	12/4/2008 1:34:...
iexplore.exe	7.00.6000.20868 ...	Windows® In...	701440	C:\Windows\win...	6/27/2008 3:58...	12/4/2008 1:34:...
iexplore.exe	7.00.6000.20868 ...	Windows® In...	625664	C:\Windows\win...	6/27/2008 3:41...	12/4/2008 1:34:...
iexplore.exe	7.00.6000.20927 ...	Windows® In...	709408	C:\Windows\win...	10/2/2008 5:50...	12/4/2008 1:34:...
iexplore.exe	7.00.6000.20927 ...	Windows® In...	633632	C:\Windows\win...	10/2/2008 5:32...	12/4/2008 1:34:...
iexplore.exe	7.00.6001.18000 ...	Windows® In...	701952	C:\Windows\win...	1/19/2008 10:0...	12/4/2008 1:34:...
iexplore.exe	7.00.6001.18000 ...	Windows® In...	625664	C:\Windows\win...	1/19/2008 9:33...	12/4/2008 1:34:...

Machine : \\\D000\Y64...001

OK