

# Knowledgebase Article

---

## Check Operating System of the selected machiens

© Copyright 2001-2009 EMCO Software

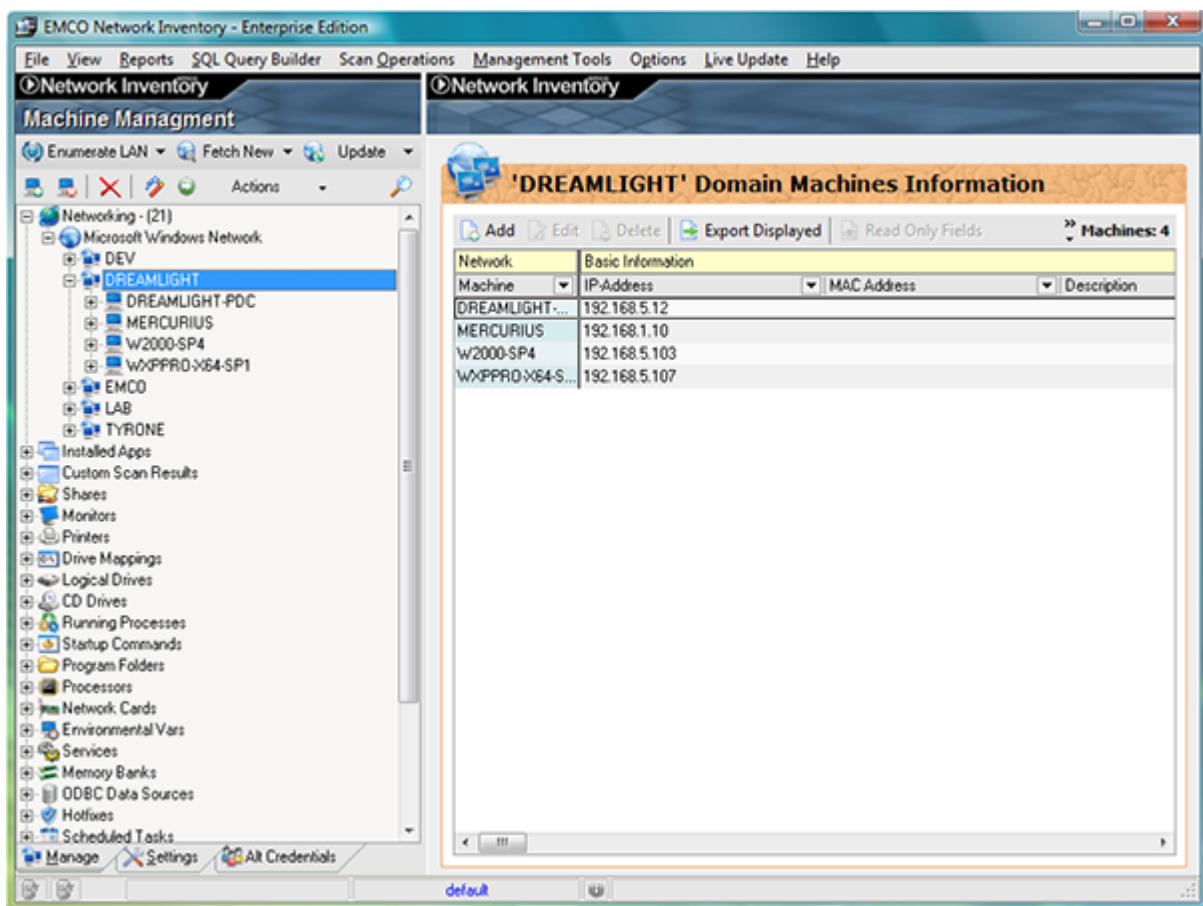
## Check the selected machines Operating System

In this tutorial we will tell you on how can you check the operating system of the selected machines in EMCO Network Inventory. There are two different ways to check the the selected machines operating system. We will discuss both of them one by one.

### WAY I

**To check the selected machines Operating System perform the following steps:**

1. Expand the **Networking** node.
2. Now expand the required **Network** node.
3. Select the domain/workgroup that you want to operate.
4. Select the machines you want to check operating systems for.
5. **Data Tab** shows the information scanned for those machines.

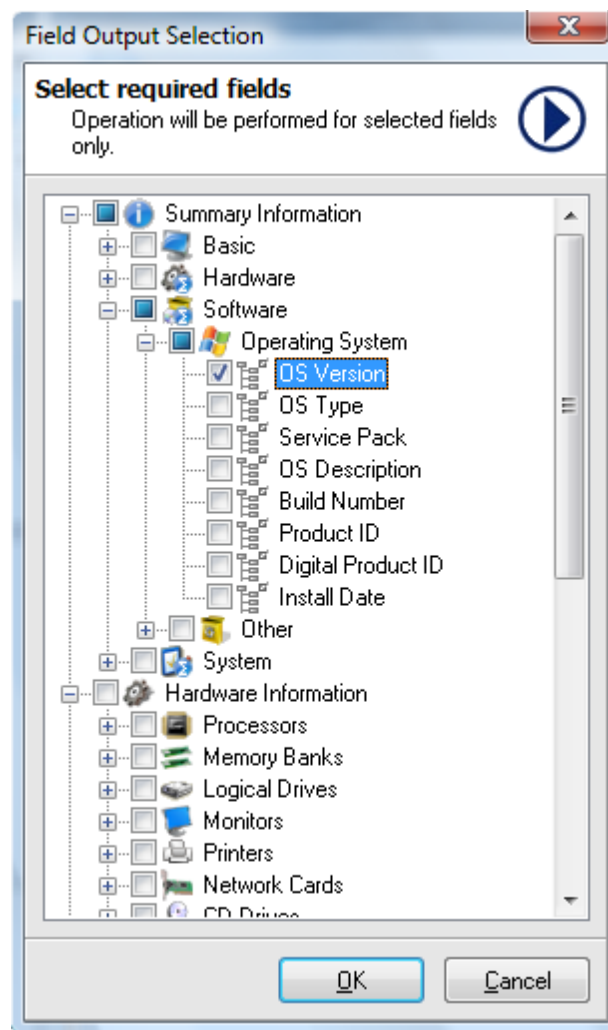


6. You can find the Operating system information under **OS Version** record.

## WAY II

To check the selected machines Operating System perform the following steps:

1. Expand the **Networking** node.
2. Now expand the required **Network** node.
3. Select the domain/workgroup that you want to operate.
4. Press the Ctrl key and select the machines that you want to process.
5. Right click any of the selected machine and select Report Selected menu item from the pop-up menu. Then click To screen menu item from the sub menu.
6. **Output Selection** dialog appears on the screen.
7. Check **OS Version** check box.



8. Click **OK** button.
9. This will generate the report with selected information on your screen.
10. Click **Print** button if you want to print your report.
11. This will print your report