

Knowledgebase Article

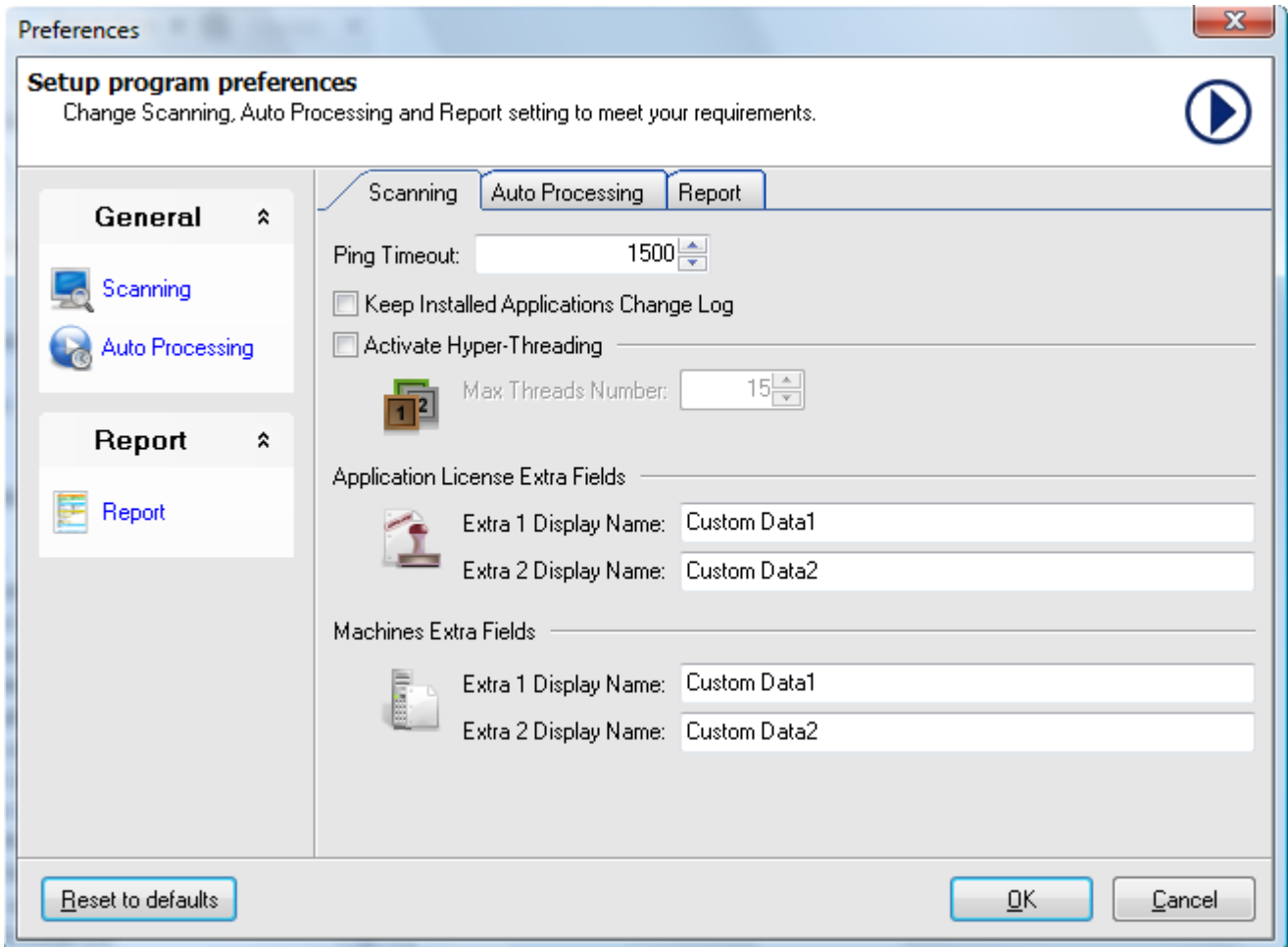
Adding Extra Fields for Machines

© Copyright 2001-2009 EMCO Software

Adding Extra Fields for Machines

To add extra fields for machines perform the followings steps:

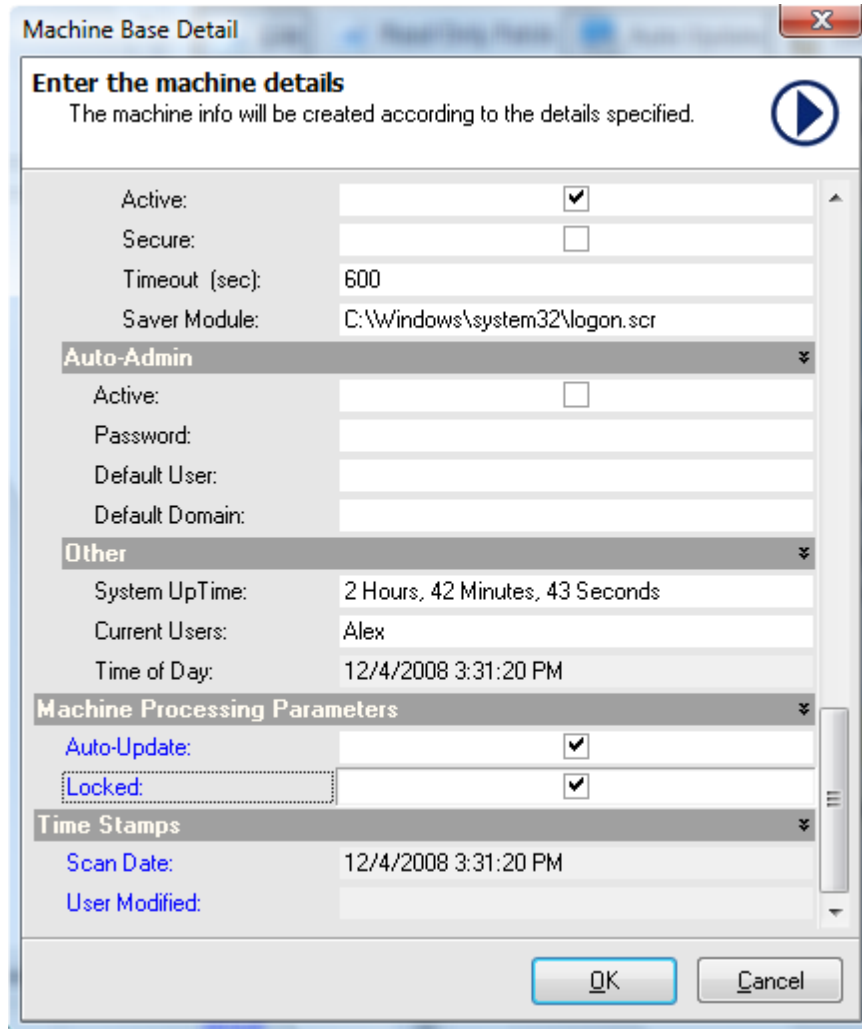
1. Switch to **Options** tab.
2. Expand the **Machines Extra Fields** node.
3. Type in the display name of the 1st extra filed in the **Extra 1 Display Name** field.



4. Type in the display name of the 2nd extra filed in the **Extra 2 Display Name** field.
5. This will add you custom fields for Machines.

To add data to your custom fields perform the following steps:

1. After creating extra fields; switch back to the **Manage** tab.
2. Expand the **Networking** node.
3. Now expand the required **Network** node.
4. Expand the required domain/workgroup node.
5. This will display the available machines on the selected Domain/Workgroup.
6. Select the machine to edit custom fields for from the machines tree.
7. Click **Edit** button shown above the **Data Tab**.
8. **Machines Details** dialog box will appear on the screen.
9. Scroll the down to get to the custom fields.
10. Type in the data for the **Custom Fields 1** in the corresponding field.
11. Type in the data for the **Custom Fields 2** in the corresponding field.



Machine Base Detail

Enter the machine details
The machine info will be created according to the details specified.

Active:

Secure:

Timeout (sec): 600

Saver Module: C:\Windows\system32\logon.scr

Auto-Admin

Active:

Password:

Default User:

Default Domain:

Other

System UpTime: 2 Hours, 42 Minutes, 43 Seconds

Current Users: Alex

Time of Day: 12/4/2008 3:31:20 PM

Machine Processing Parameters

Auto-Update:

Locked:

Time Stamps

Scan Date: 12/4/2008 3:31:20 PM

User Modified:

OK Cancel

12. Click **Ok** button.
13. This will add the data for your custom fields.