

Knowledgebase Article

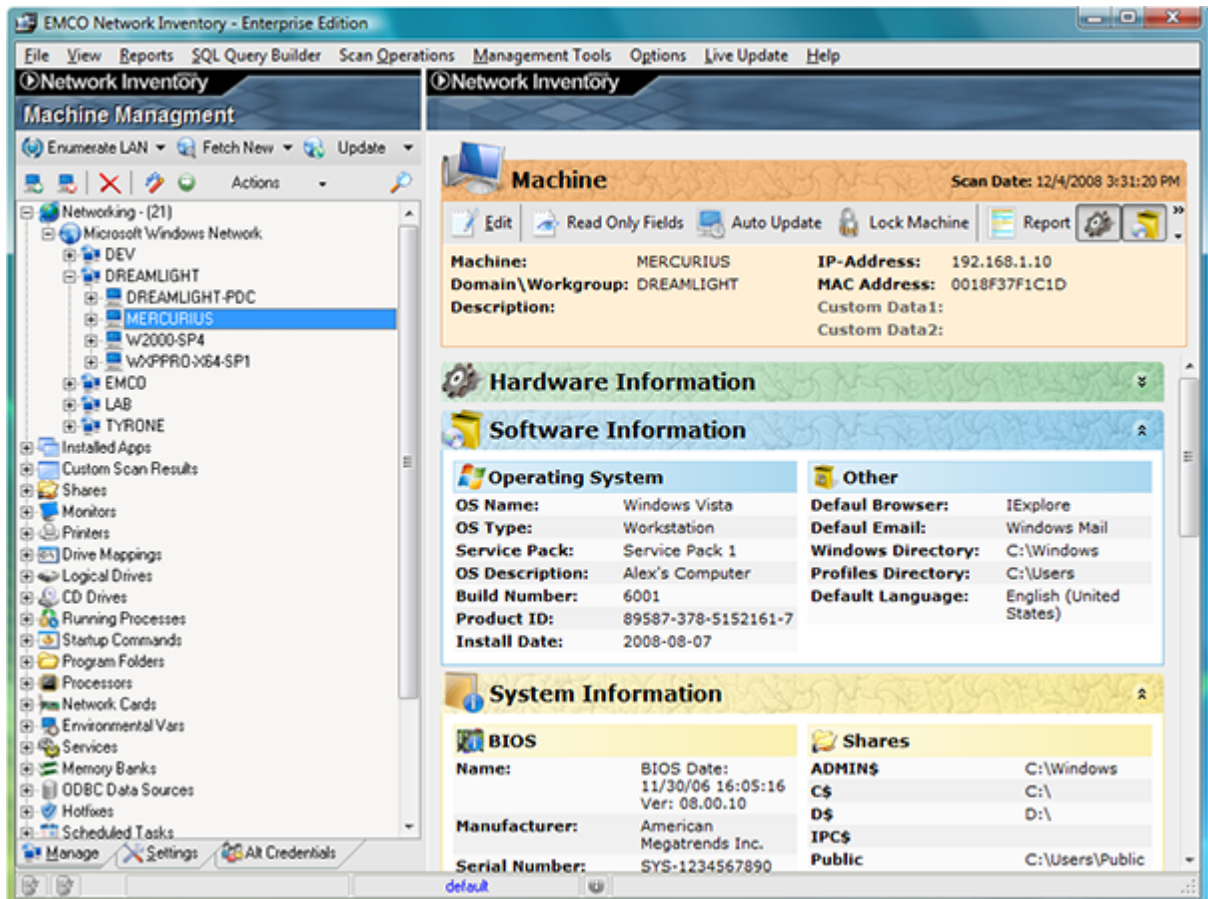
Adding Details for Manually Added Machines in NI

© Copyright 2001-2009 EMCO Software

Adding Details for Manually Added Machines in NI

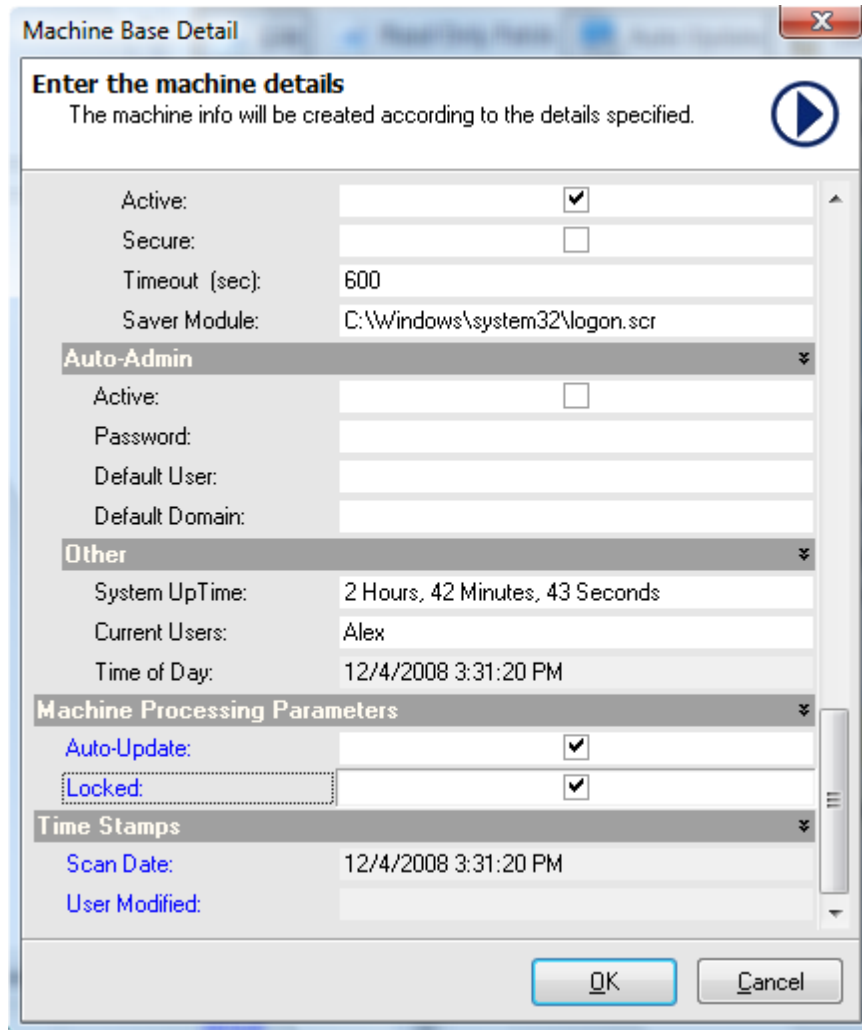
To add details for manually added machine perform the following steps:

1. Expand the **Networking** node.
2. Expand **Microsoft Windows Network** node.
3. Expand your required domain/workgroup node.
4. Select the machine you want to add details to from the machines tree.



5. Click **Edit** button located above the **Data** Tab.

6. **Machines Details** dialog appears on the screen.
7. Select the your network provider from the **Provider** drop-down list.
8. Select the required domain/workgroup form drop-down list.
9. Type the machine name.
10. Type the description of the machine in the **Description** field.
11. Type the IP address of the machine in the **IP Address** field.
12. To enable auto update for this machine set the **Auto Update** option checked.
13. To lock this machine click **Locked** check box.
14. Type the custom data 1 for this machine in **Custom Data 1** field.
15. Type the custom data 2 for this machine in **Custom Data 2** field.
16. Type the required basic information for this machine in the **Basic Info** section.
17. Check the **Active** check box shown under Auto Admin section to activate auto admin feature.
18. Type the required Logged-on user information in the **Logged-on** section.
19. Select the required screen saver options under **Screen Saver** section.



Machine Base Detail

Enter the machine details
The machine info will be created according to the details specified.

Active:

Secure:

Timeout (sec): 600

Saver Module: C:\Windows\system32\logon.scr

Auto-Admin

Active:

Password:

Default User:

Default Domain:

Other

System UpTime: 2 Hours, 42 Minutes, 43 Seconds

Current Users: Alex

Time of Day: 12/4/2008 3:31:20 PM

Machine Processing Parameters

Auto-Update:

Locked:

Time Stamps

Scan Date: 12/4/2008 3:31:20 PM

User Modified:

OK Cancel

20. Click **Ok** button on Machine Details dialog.